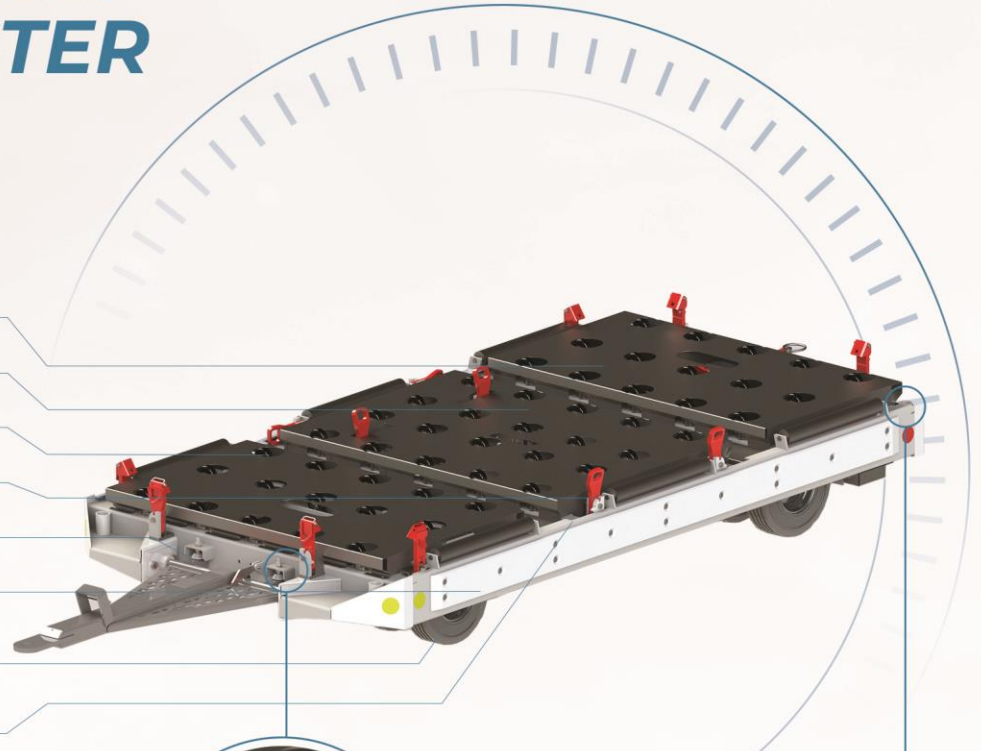


CARGO DOLLY

UNIVERSAL PALLET CONTAINER DOLLY ENCLOSED CASTER

PCT500C
LD8

- Cargo capacity up to 15,000 lb
- Standard or upgraded caster options
- Galvanized for longer life
- Truly universal lock configuration
- Towbar activated braking
- Optional side rub rails
- Solid tires with optional wheel covers / splash guards
- Replaceable Caster Cover Modules



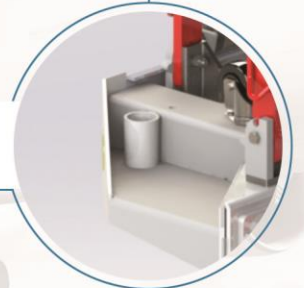
Adjustable height towbar deadlock with height adjustment



WHY AVRO

- ▶ 12 months standard warranty
- ▶ Single assigned point of service for maximum uptime
- ▶ Multiple purchase, rental and finance options
- ▶ Dedicated parts distribution North America-wide

Stackable for shipping and storage



AIRCRAFT GROUND SUPPORT SALES AND SERVICE

SPECIFICATIONS

LENGTH (WITH TOW BAR)	4661 mm
LENGTH (WITH RAISED TOW BAR)	3514 mm
WIDTH	1682 mm
HEIGHT	521 mm
MAX DRIVING SPEED	30km/h
TOTAL WEIGHT	950 kg
MAX. PERMITTED LOAD	2400 kg
PALLET CAPACITY	61" x 125" and 61" x 61"
ULD CAPACITY	2xLD2, LD3,LD8,LD11

FEATURES

- E_Z bolt on stops of lower deck containers
- Spring loaded tip-up pallet stops
- 50 casters with 6 + 2 - 2 ½" diameter rollers
- 400 x 8 x 3.75 solid rubber tires mounted on demountable rims
- Towbar actuated brakes
- Front dual wheel swivel casters with dual rear wheels
- E-Type Rear hitch, spring loaded
- Stackable for shipping and storage
- Additional features available
- 12 Month warranty

