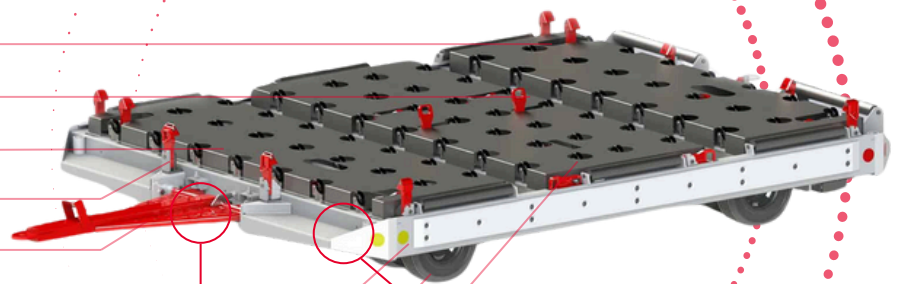


# Universal Pallet Container Dolly Enclosed Caster

PCT600C  
LD7

- Cargo capacity up to 15,000 lb
- Standard or upgraded caster options
- Galvanized for longer life
- Truly universal lock configuration
- Towbar activated braking
- Optional side rub rails
- Solid tires with optional wheel covers / splash guards
- Replaceable caster cover modules



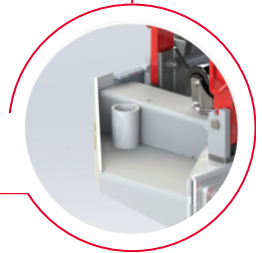
Adjustable height towbar deadlock with height adjustment



## WHY AVRO

- ▶ 1 year standard warranty
- ▶ Customized business relationship
- ▶ AAA maintenance program
- ▶ Stock locations in the United States and Canada

Stackable for shipping and storage



AIRCRAFT GROUND SUPPORT EQUIPMENT

Specification	
MODEL	PCT600C LD7
LENGTH (WITH TOW BAR)	184" (4,660mm)
LENGTH (WITH RAISED TOW BAR)	138" (3,510mm)
WIDTH	66" (1,680mm)
HEIGHT	20" (521mm)
TOTAL WEIGHT	2,094lb (950kg)
MAX. PERMITTED LOAD	1,089lb (2,400kg)
PALLET CAPACITY	88" x 125" and 96" x 125" (2,235 x 3,175mm and 2,438 x 3,175mm)
ULD CAPACITY	LD2x2, LD3x2, LD4, LD7, LD8, LD11

## Features

- E\_Z bolt on stops of lower deck containers
- Spring loaded tip-up pallet stops
- 70 casters and 6 side rollers : 2.5" diameter x 22" long
- 400 x 8 x 3.75 solid rubber tires mounted on demountable rims
- Towbar actuated brakes
- Front dual wheel swivel casters with dual rear wheels
- E-type rear hitch, spring loaded
- Stackable for shipping and storage
- Additional features available
- 12 month warranty