

CLOSED BAGGAGE CART



Assembly Instructions


To be used when carts are shipped on end and assembled

AIRCRAFT GROUND SUPPORT SALES AND SERVICE

 AVROGSE.COM

 INFO@AVROGSE.COM

 4 GREAT PLAINS ROAD, EMERALD PARK, SK S4L 0B8 CA

 1-877-602-2159



Installing Brake Bar and Brake Adjuster

Step 1 Install brake bar onto the unit (Number 1) using the supplied hardware (Numbers 2,3,4). Refer to Figure 1 for help on installing. See Figure 2 for part numbers and descriptions.

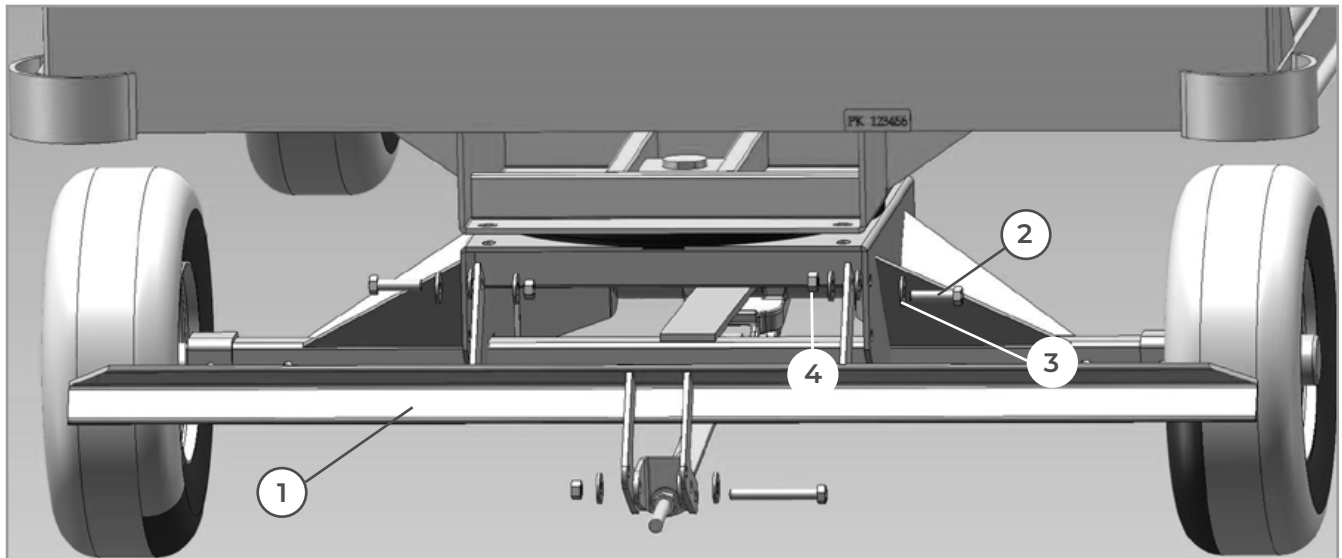


FIGURE 1

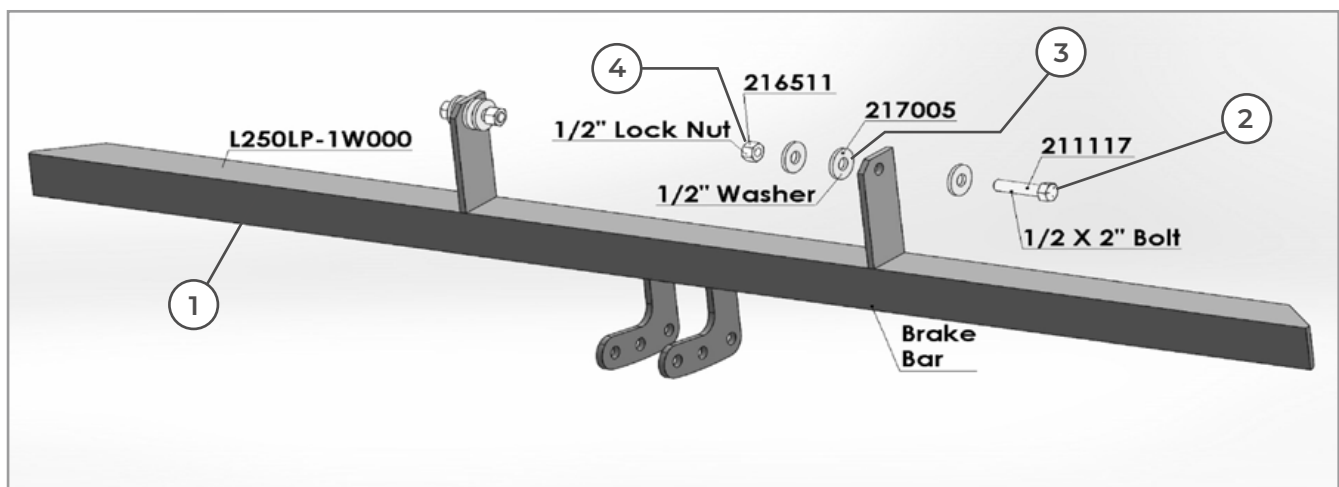


FIGURE 2

Step 2

Install brake adjuster (Number 1) onto the brake bar using supplied hardware (Numbers 2,3,4). Please note the knuckle attaches to the end of the brake bar and the adjuster rod and nut will face down as shown in the picture above. Please see Figure 4 for part numbers and descriptions.

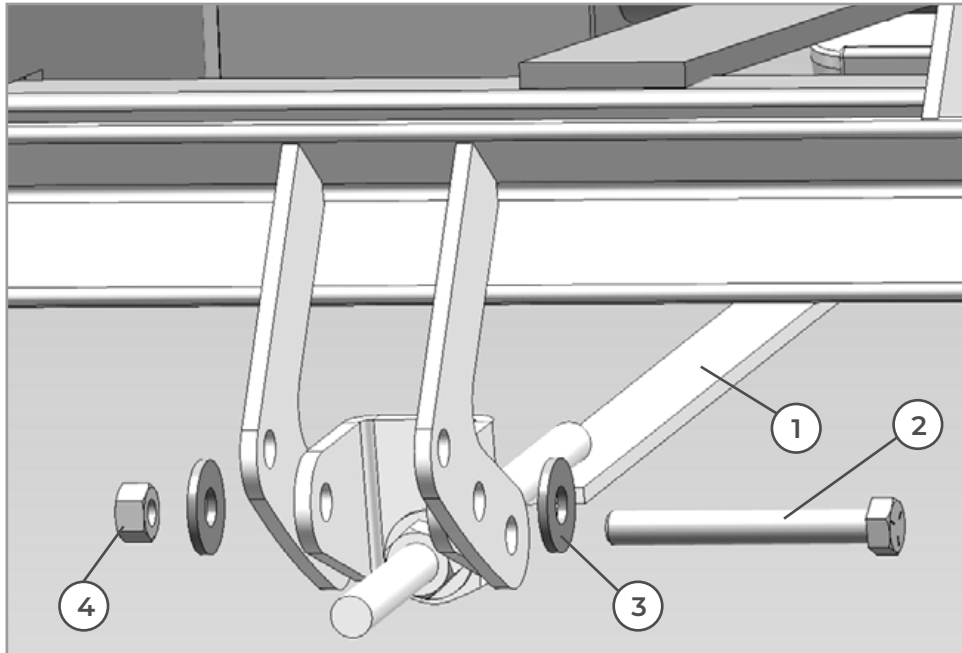


FIGURE 3

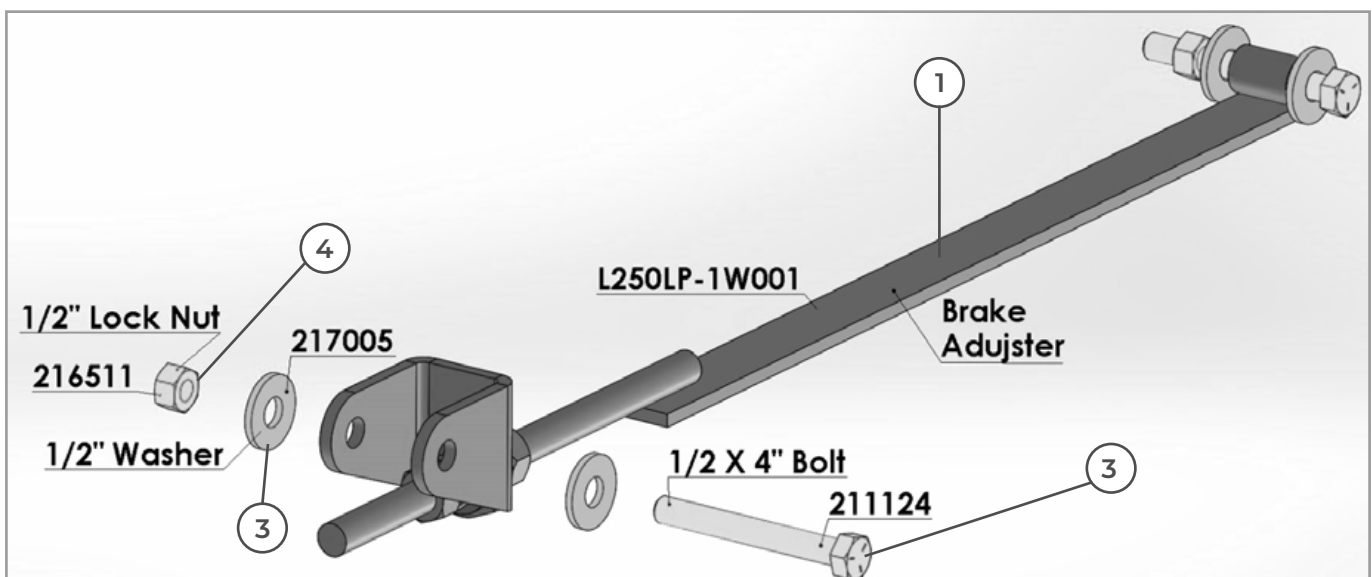


FIGURE 4

Installing Black Corner Bumpers

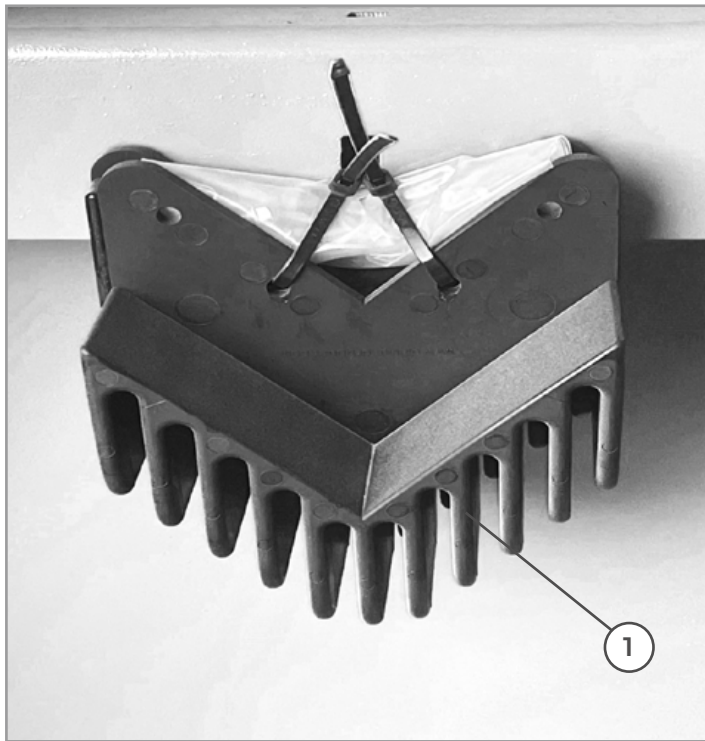


FIGURE 5

Step 1

The rear corner bumpers are zip tied to each unit on the inside rear wall. Cut the zip ties holding the rear bumpers and the hardware bag necessary for installing the bumpers on the unit (See Figure 6).

Step 2

Install the corner bumpers (Number 1) on the rear of the unit using the supplied hardware (Numbers 2,3). Please note number 2 are self tapping screws no pre drilling is required to install. Please see Figure 7 the next page for part numbers and description.

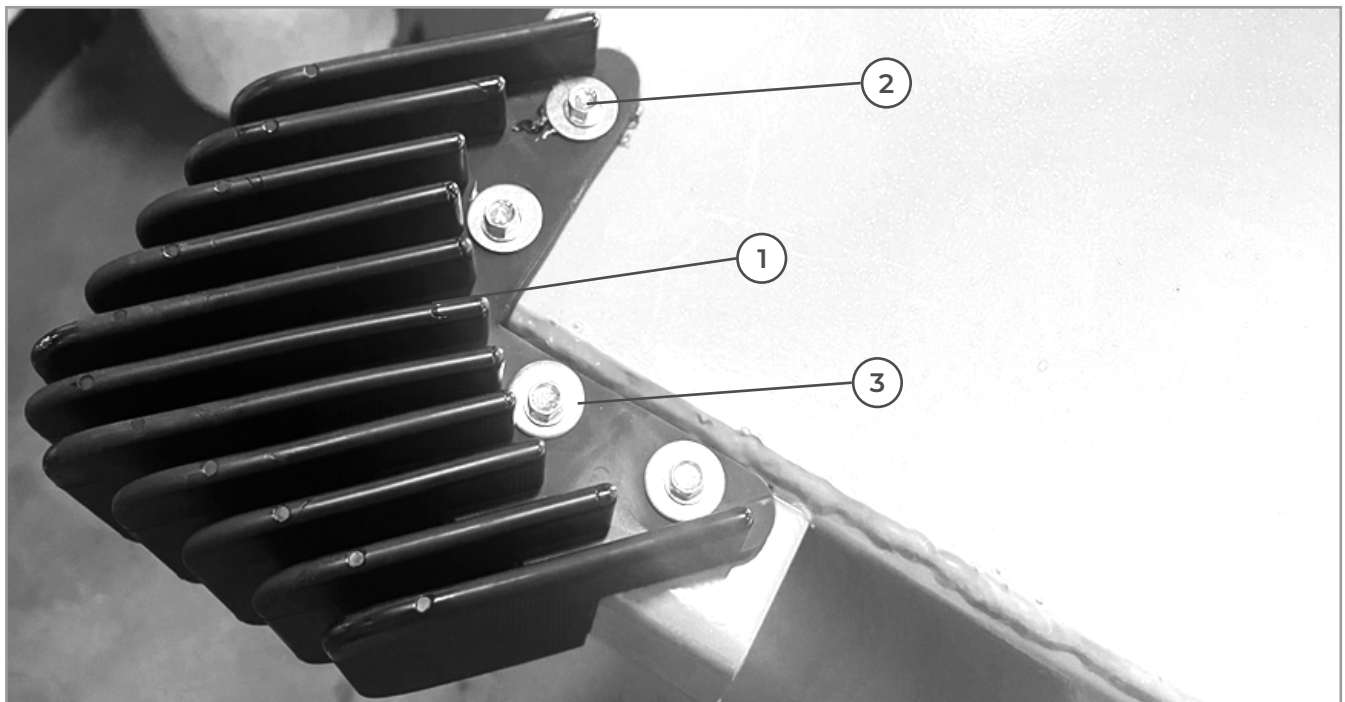


FIGURE 6

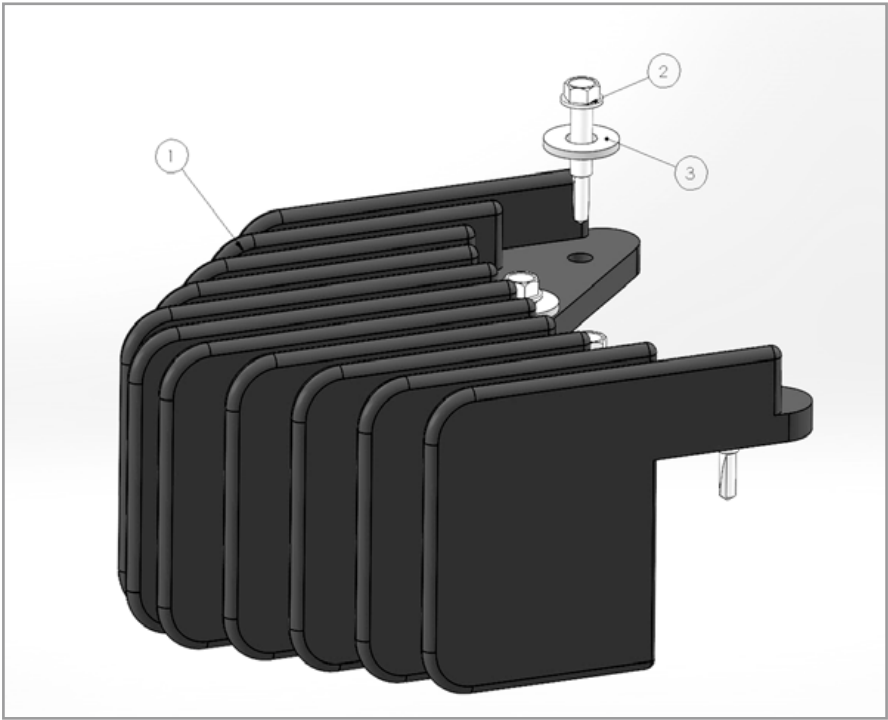


FIGURE 7

No.	Part Number	Description
1	201101	Black Corner Bumper
2	215658	12-24 X 1-1/4" Self Drilling Screw
3	217001	1/4" Flat Washer

Installing E-hitch

Install the E-Hitch (Number 1) in the top set of holes on the E-hitch base plate on the unit. Use the supplied hardware to do so (Numbers 2,3,4). Please reference the pictures above for mounting. Please see Figure 10 for part numbers and descriptions.

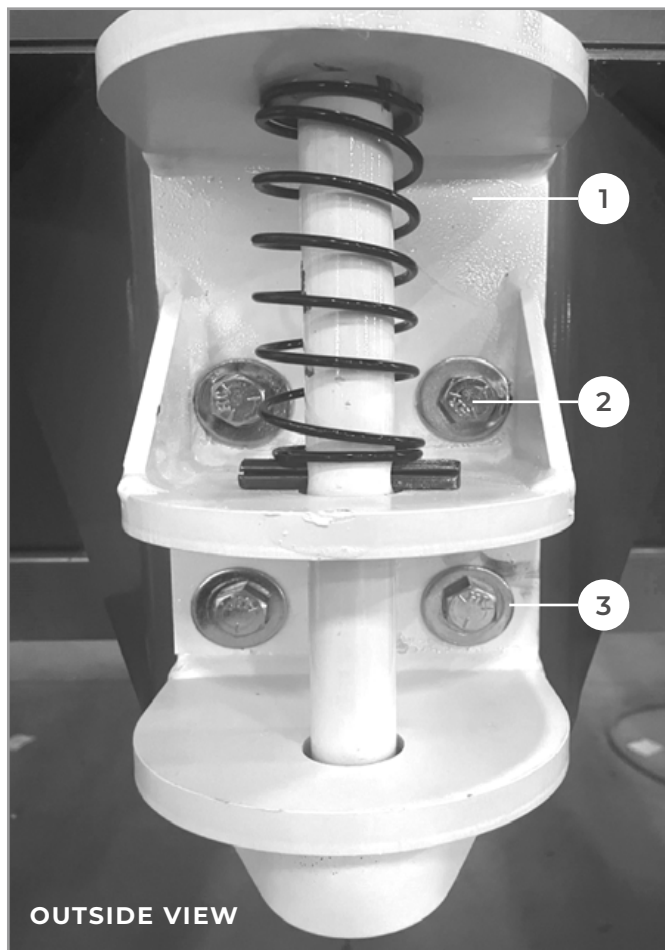


FIGURE 8

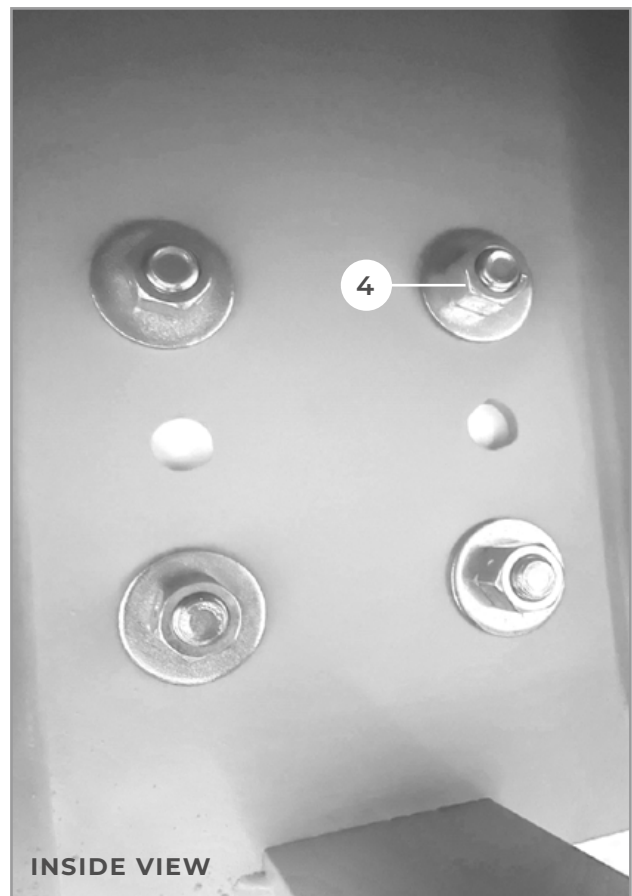


FIGURE 9

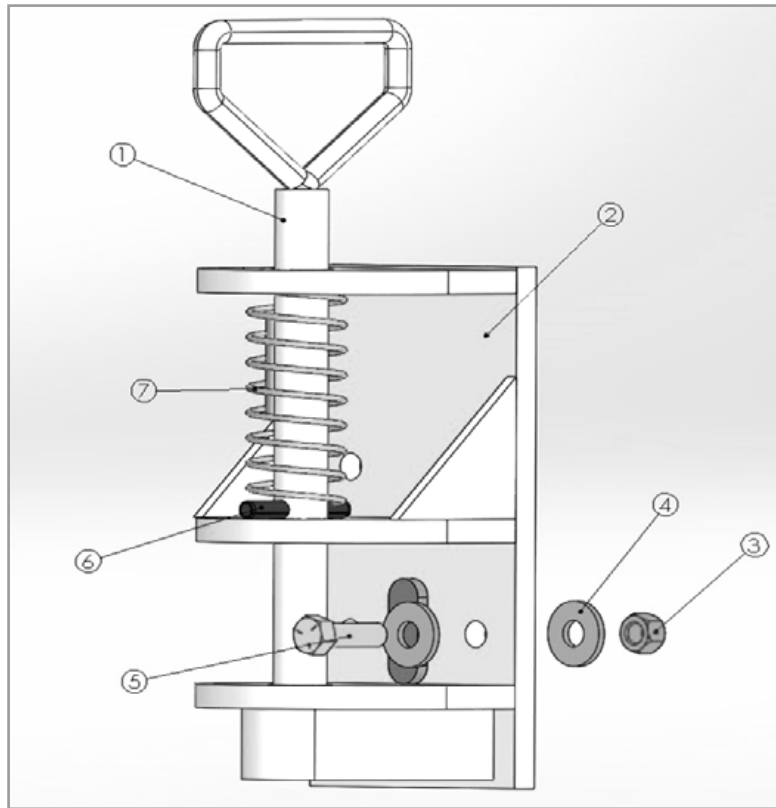


FIGURE 10

No.	Part Number	Description
1	CBC510-9W014	Handle
2	CBC510-9W012	Hitch Base Plate
3	216009	1/2"-13 Nut
4	217005	1/2" Washer
5	211104	1/2-13"x1 1/2" Bolt
6	210104	3/8' X 2-12" Roll Pin
7	270528	Spring
8	CBC510-9A011	Complete E-hitch (Does not include Mounting Hardware 3, 4, and 5)