



Spare Parts Catalog

3 WG 94

Material number: 4661.044.012

Current date: 21.07.2022

ZF Friedrichshafen AG
Hauptverwaltung
80038 Friedrichshafen
Deutschland

Telefon: +49 7541 77-0

Telefax: +49 7541 77-908000

www.zf.com

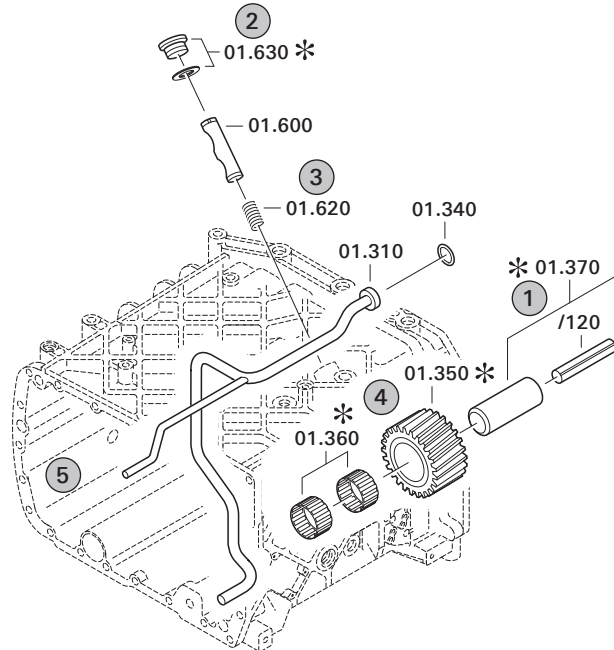
zuständiges Werk:
Passau

Notes relating to the spare parts catalog

Setup of the spare parts catalog

- Cover sheet
- Technical Cover (only in SDM print)
- Overview of figures
- Figure
- Associated parts list
- Next figure
- Associated parts list
- ...

Figure and parts list



Overview of figures

Bildtafel Figure	Sachnummer Product number	Benennung (Description)	Technische Info Technical info	Description (Benennung)	Menge Quantity	Einheit Unit
068.08.17	1316.170.001	AUSLEGER	WL	SHIFT TURRET	1	Stk
068.08.06	1316.170.031	DECKEL	WL*H-H*VM	COVER	1	Stk
068.08.14	1316.170.808	DECKEL	WL*AUSL+GEH*H-H*HF160N	COVER	1	Stk
08	1316.170.441	ANSCHLUSSTEILE	WL*NG-VORB*RG-SCHL*168N*BAJONETT	CONNECTING PARTS	1	Stk

The "gap" indicates that there is no separate graphics panel (poster) for this assembly
The parts of this assembly are shown with the same mid-section number on the figure

1 Positions and subpositions

Pos.	Sachnummer Product number	Benennung (Description)	Technische Info Technical info	Description (Benennung)	Menge Quantity	Einheit Unit
0370	1315.201.054	RUECKLAUFBOLZEN	KPL.16S151*SG*L= 79	REV.IDLER SHAFT	1	Stk
/0120	0631.329.293	SPANNSTIFT		SLOT. PIN	1	Stk

Positions marked with "/" are the individual items of a completion
For example: Position 0370 contains a centering pin with the position /0120

2 Combinations with standardized parts

Pos.	Sachnummer Product number	Benennung (Description)	Technische Info Technical info	Description (Benennung)	Menge Quantity	Einheit Unit
0630		VERSCHL.SCHR.		SCREW PLUG	1	Stk
	0636.302.067	VERSCHL.SCHR.		SCREW PLUG	1	Stk
	0634.801.249	DICHTRING	A 26 X 31	SEALING RING	1	Stk

The parts list shows the components included in the combination of standardized parts

3 Depiction of position/item number on the figure and in the parts list

01.620 - on the figure 01 relates to the assembly in which the position is included. Due to program-related reasons, it is shown on the figure.

0620 - in the parts list

Pos.	Sachnummer Product number	Benennung (Description)	Technische Info Technical info	Description (Benennung)	Menge Quantity	Einheit Unit
0620	0732.040.736	DRUCKFEDER		COMPRESSION SPRING	1	Stk

4 *-Positions

Positions marked with an * are optional i.e. inclusion in the parts list is not mandatory.
The following note is shown on the figure

je nach Stücklistenausführung
depending on spec. number
*
suivant la nomenclature
secondo la distinta base

5 Parts, dotted display

Parts with dotted display on the figure are only used for orientation of other parts



Pos.	Information	Amendment number
	CUSTOMER: AVRO GSE	
	1.PERFORMANCE CALC.: 4660 706 527	
	VEHICLE DESIGNATION: BAGGAGE TRACTOR XT670D	
	WEIGHT LOADED: 42,500 TO	
	WEIGHT EMPTY: 4,500 TO	
	ENGINE: KOHLER KDI2504TCR@23	
	ENGINE POWER: 55,4 KW	
	SPEED: 2300 U/MIN	
	INPUT TORQUE: 300 NM	
	SPEED: 1500 U/MIN	
	TYRE SIZE: 7.00-15-12PR	
	TYRE RADIUS DYN.: 0,355 M	
	AXLE RATIO: 8,170	
	MAX. SPEED: 38,5 KM/H	
	PRODUCT DESCRIPTION: ZF-ERGOPOWER S	
	PRODUCTION LOCATION: GAINESVILLE	
	TRANSMISSION TYPE: 3 WG 94	
	DROP CENTER DISTANCE: 155 MM	
	VEHICLE: TERMINAL TRUCK	
	1. GEAR FORWARD: 4,841	
	2. GEAR FORWARD: 2,405	
	3. GEAR FORWARD: 1,000	
	1. GEAR REVERSE: 4,845	
	2. GEAR REVERSE: 2,406	
	3. GEAR REVERSE: 1,001	
	CONVERTER: W 280	
	LOCK-UP CLUTCH: WITHOUT	
	STALL TORQUE RATIO: 3,08	
	TORQUE CONVERTER ABSORPTION: 158 NM	
	STATOR FREEWHEEL: WITH	
	ENGINE INPUT: DIRECT MOUNTED TO ENGINE	
	ENGINE-CONNECTION: SAE 3	
	ENGINE: NEW ENGINE	



Pos.	Information	Amendment number
	BOLT CIRCLE: 333,4 MM	
	CONNECTION: HOLE	
	OUTPUT: STANDARD	
	OUTPUT FLANGE PTO SIDE: MECH 5 C	
	POWER TAKE OFF: 1 PTO ENGINE-DEP. DISPLASED	
	1.PTO FLANGE: SAE B 2 HOLE	
	DRIVER PROFILE: SAE B 16/32 DP 13 T	
	GEAR CHANGE CONTROL: ZF-POWERSHIFT	
	VOLTAGE: 24 VOLT	
	SPEED SENSOR: CONNECTION VIA EST	
	OIL LEVEL TUBE: MOUNTED ON CONVERTER SIDE	
	OIL DIPSTICK: ANBAU_RECHTS	
	FILTER INSTALLATION: STANDARD	
	TEMPERATURE SENSOR T/C: WITH (VIA EST)	
	CONTROL UNIT: EST 65	
	ELECTRIC PARTS ORDER: SEPARATE ORDER	
	SEPARATE ORDER: 4661.185.042 IN PASSAU	
	GEAR SELECTOR: VTS-3	
	DISPLAY: FOR SEPARATE MOUNTING	
	WIRING: WITHOUT	
	OIL CAPACITY TRANSM.: CA. 15 LITRE	
	OIL FILLING TRANSM.: WITHOUT	
	OIL GRADE TRANSM.: TE- ML 03	
	PRIMER PAINT: BLACK RAL 9005	
	DOCUMENTATION GEAR BOX: -----	
	SECTION DRAWING: 4661 044 002	
	INSTALLATION DRAWING: 4661 644 005	
	GEARBOX DIAGRAM: 4661 700 024	
	OIL CIRCUIT DIAGRAM: 4661 700 089	
	INSTALL. INSTRUCTIONS: 0000 702 988	
	DOCU. CONTROL UNIT: -----	
	DRAWING: 6009 665 002	
	DRAWING GEAR SELECTOR: 6006 635 005	

Technical Cover

Page 3 from 3

Material number: 4661.044.012



3 WG 94 /

Pos.	Information	Amendment number
	CONNECTION DIAGRAM: 6006 700 529	
	CONNECTION DIAGRAM: 6029 702 845	
	DRAWING DISPLAY: 6007 603 047	

Assembly group overview

Page 1 from 2

Material number: 4661.044.012



3 WG 94 /

Picture	Pos.	Material number	Name	Quantity	Amend. no.	Techn. Info.
	10	0768.350.090	INDUCTIVE SENSOR	2		
	110	6029.199.011	PLUG KIT	3		
466113000400	250	4661.130.004	ENGINE CONNECTION	1		
466113400800	240	4661.134.008	CONVERTER	1		
466110201500	130	4661.102.015	INPUT	1		
466110103900	110	4661.101.039	TRANSMISSION HOUSING	1		
466110182500	120	4661.101.825	TRANSMISSION HOUSING	1		
466117100700	230	4661.171.007	COUPLING	1		
466117202500	210	4661.172.025	COUPLING	1		
466117400800	200	4661.174.008	COUPLING	1		
466117600700	190	4661.176.007	COUPLING	1		
466110381500	160	4661.103.815	OUTPUT	1		
466115500200	320	4661.155.002	POWER TAKE-OFF	1		
466110601200	270	4661.106.012	CONTROL UNIT	1		
466112200500	280	4661.122.005	PRESSURE OIL PUMP	1		
466112500100	340	4661.125.001	INDUCTIVE SENSOR	1		
466112400100	350	4661.124.001	TEMPERATURE SENSOR	1		

Assembly group overview

Page 2 from 2

Material number: 4661.044.012



3 WG 94 /

Picture	Pos.	Material number	Name	Quantity	Amend. no.	Techn. Info.
466113800300	290	4661.138.003	FILTER	1		
466113100800	260	4661.131.008	OIL DIPSTICK	1		
466118504200	950	4661.185.042	ACCESSORIES	1		

Parts list

Page 1 from 1

Material number: 4661.044.012

Material-assembly-group-no: 0768.350.090



3 WG 94 /

	Pos.	Material number	Customer material	Name	Quantity	ME	Amend. no.	Techn. Info.	Rep kit	Alternative material
	10	---		INDUCTIVE SENSOR	1					
	---	0501.209.719		INDUCTIVE SENSOR	1					
	/10	0734.313.125		O-RING	1					

Parts list

Page 1 from 1

Material number: 4661.044.012

Material-assembly-group-no: 6029.199.011



3 WG 94 /

	Pos.	Material number	Customer material	Name	Quantity	ME	Amend. no.	Techn. Info.	Rep kit	Alternative material
		6029.199.011		PLUG KIT	3			STECKER 2POL MINI-TIMER		

Picture

Page 1 from 1

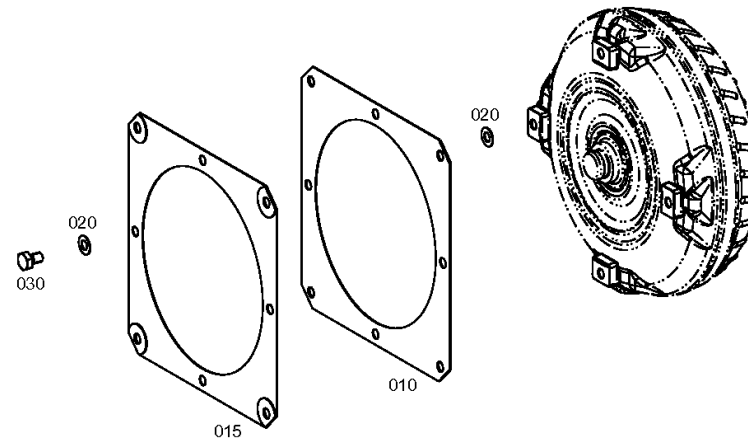
Material number: 4661.044.012

Picture: 466113000400

Material-assembly-group-no: 4661.130.004



3 WG 94 /
ENGINE CONNECTION



Parts list

Page 1 from 1

Material number: 4661.044.012

Picture: 466113000400

Material-assembly-group-no: 4661.130.004



3 WG 94 /

	Pos.	Material number	Customer material	Name	Quantity	ME	Amend. no.	Techn. Info.	Rep kit	Alternative material
	10	4642.230.036		DIAPHRAGM	1			A=333,4		
	15	4642.230.036		DIAPHRAGM	1			A=333,4		
	20	0730.301.765		WASHER	8			h=1,00		
	30	---		HEXAGON SCREW	4			M10X16		
	---	0636.031.180		HEXAGON SCREW	1			M10X16		

Picture

Page 1 from 1

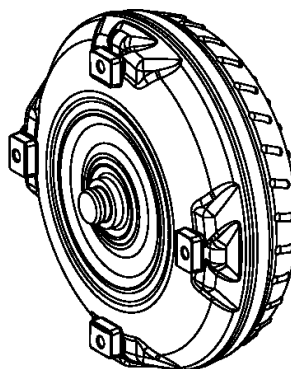
Material number: 4661.044.012

Picture: 466113400800

Material-assembly-group-no: 4661.134.008



3 WG 94 /
CONVERTER



010

Parts list

Page 1 from 1



3 WG 94 /

Material number: 4661.044.012

Picture: 466113400800

Material-assembly-group-no: 4661.134.008

	Pos.	Material number	Customer material	Name	Quantity	ME	Amend. no.	Techn. Info.	Rep kit	Alternative material
	10	4168.028.379		CONVERTER	1		Z00056522513			

Picture

Page 1 from 1

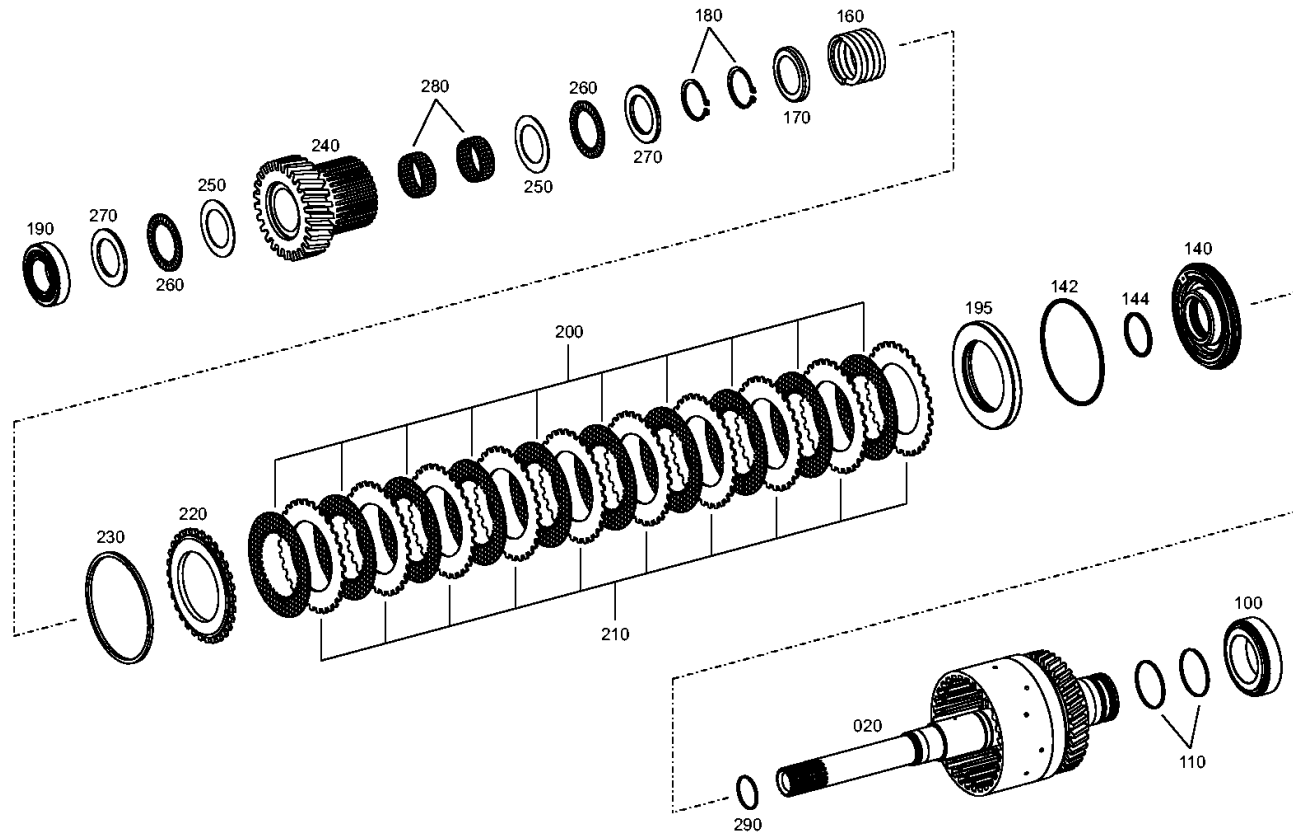
Material number: 4661.044.012

Picture: 466110201500

Material-assembly-group-no: 4661.102.015



3 WG 94 /
INPUT



Parts list

Page 1 from 1



3 WG 94 /

Material number: 4661.044.012

Picture: 466110201500

Material-assembly-group-no: 4661.102.015

	Pos.	Material number	Customer material	Name	Quantity	ME	Amend. no.	Techn. Info.	Rep kit	Alternative material
	20	4661.202.030		INPUT SHAFT	1					
	100	4661.201.005		TAPERED ROLLER BEARING	1		Z00019566910	50,000X80,000X20,000		
	110	0734.401.309		RECTANGULAR RING	2			50X2.5		
	140	4661.275.010		PISTON	1			KPL. D-Teil		
	142	0634.313.005		O-RING	1			104,5X3		
	144	0634.313.395		O-RING	1			40X3		
	160	0732.042.926		COMPRESSION SPRING	1					
	170	4661.302.005		SPRING CUP	1					
	180	0630.501.031		RETAINING RING	2			40X1,75		
	190	4661.202.016		TAPERED ROLLER BEARING	1			34,925X65,088X18,034		
	195	4661.202.026		SHEET	1					
	200	0501.232.652		INNER CLUTCH DISK	10		Z00031585911			
	210	4661.351.003		OUTER CLUTCH DISK	10		Z00048463110			
	220	0501.321.411		END SHIM	1					
	230	---		SNAP RING	1		Z00018874410			
	---	0730.514.794		SNAP RING	1			D-TEIL*h=3,00		
	---	0730.514.792		SNAP RING	1			h=2,50		
	---	0730.514.793		SNAP RING	1			h=2,75		
	---	0730.514.795		SNAP RING	1			h=3,25		
	---	0730.514.796		SNAP RING	1			h=3,50		
	---	0730.514.797		SNAP RING	1			h=3,75		
	---	0730.514.798		SNAP RING	1			h=4,00		
	240	4661.375.011		INNER DISK CARRIER	1			Z=26		
	250	0635.290.035		AXIAL WASHER	2			40X60X1		
	260	0635.302.034		AXIAL NEEDLE CAGE	2			40X60X3		
	270	0635.290.063		RUNNING DISK	2			40X60X3,5		
	280	0735.321.579		NEEDLE CAGE	2			40X45X17		
	290	0734.401.308		RECTANGULAR RING	1			35,0X2,0		

Picture

Page 1 from 2

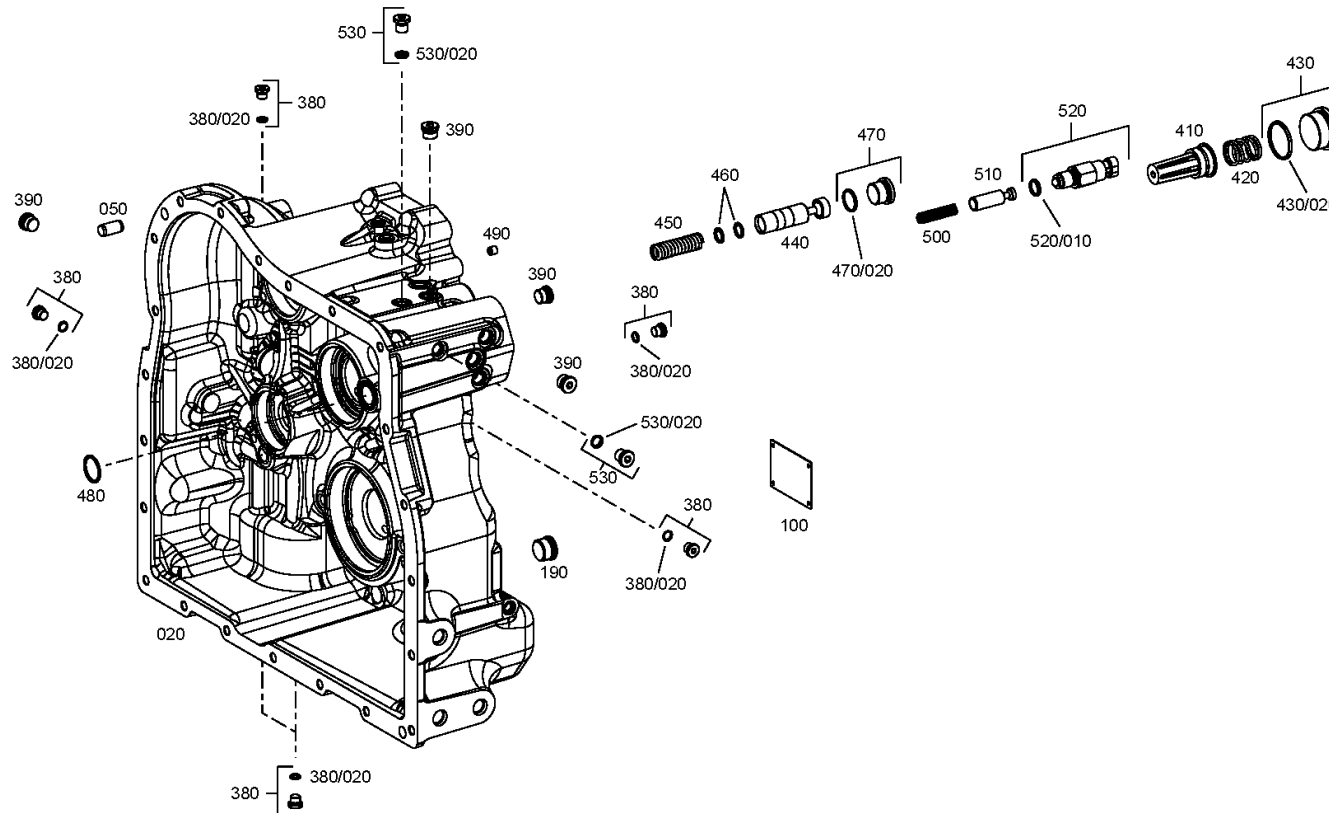
Material number: 4661.044.012

Picture: 466110103900

Material-assembly-group-no: 4661.101.039



3 WG 94 /
TRANSMISSION HOUSING



Picture

Page 2 from 2

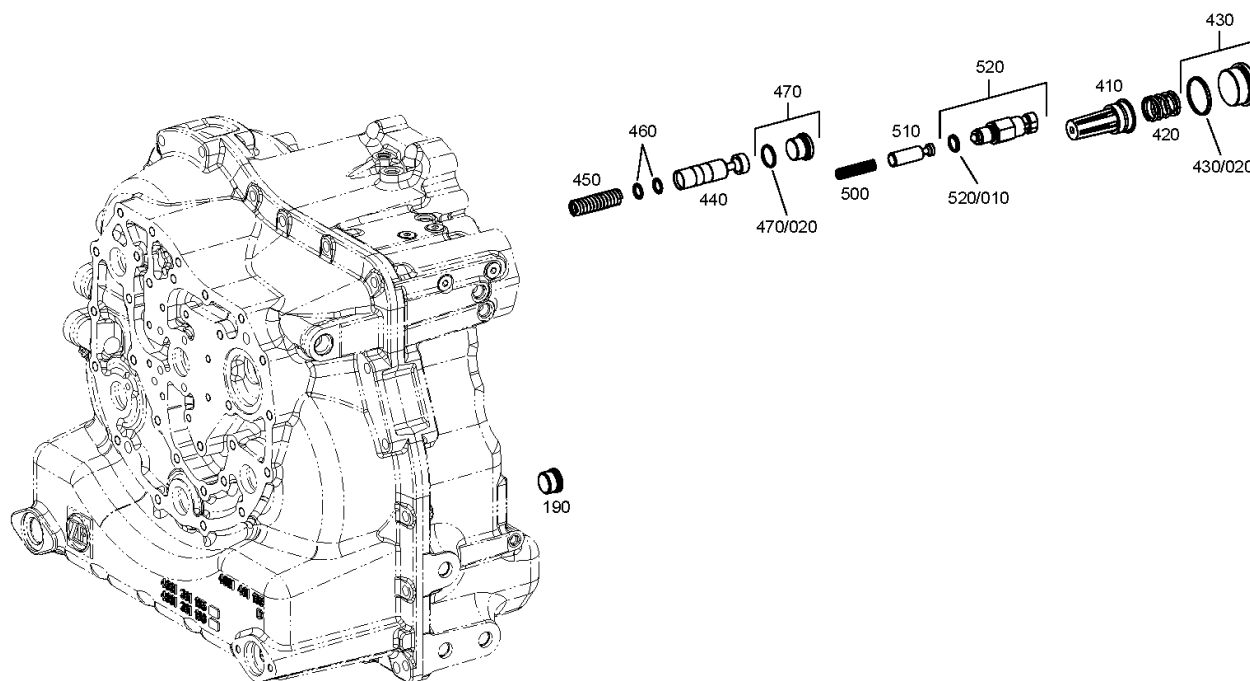
Material number: 4661.044.012

Picture: 466110103980

Material-assembly-group-no: 4661.101.039



3 WG 94 /
TRANSMISSION HOUSING



Parts list

Page 1 from 2

Material number: 4661.044.012

Picture: 466110103900

Material-assembly-group-no: 4661.101.039



3 WG 94 /

	Pos.	Material number	Customer material	Name	Quantity	ME	Amend. no.	Techn. Info.	Rep kit	Alternative material
	20	4661.301.109		HOUSING II	1					
	50	0631.306.174		CYLINDRICAL PIN	2			12X24		
	100	0769.123.894		TYPE PLATE	1					
	190	0750.100.022		SCREW PLUG	1		Z00045976710	7/8-14 UN 2A		
	380	4660.201.008		SCREW PLUG	24			M10X1,5/DIN908/KPL.MIT O-RING		
	/20	0634.303.280		O-RING	1			8X1,5		
	390	0636.100.117		SCREW PLUG	9			UNF9/16-18		
	410	0501.211.384		VALVE	1					
	420	0732.042.156		COMPRESSION SPRING	1					
	430	---		SCREW PLUG				M38X1,5 *M*O-RING		4475.280.204
	430	4475.280.204		SCREW PLUG	1					
	/20	0634.314.304		O-RING	1			35X2		
	440	4661.306.003		PISTON	1					
	450	0732.043.009		COMPRESSION SPRING	1					
	460	---		SPACER RING	1					
	---	0730.006.260		SPACER RING	1			A=0,800		
	---	0730.006.261		SPACER RING	1			A=1,0		
	---	0730.006.262		SPACER RING	1			A=1,200		
	---	0730.006.263		SPACER RING	1			A=1,400		
	---	0730.006.264		SPACER RING	1			A=1,600		
	---	0730.006.265		SPACER RING	1			A=1,800		
	---	0730.006.266		SPACER RING	1			A=2,0		
	---	0730.006.267		SPACER RING	1			A=2,200		
	---	0730.006.268		SPACER RING	1			A=2,400		
	---	0730.006.269		SPACER RING	1			A=2,600		
	---	0730.006.270		SPACER RING	1			A=2,800		
	470	4660.201.007		SCREW PLUG	1		Z00028811510	M22X1,5/DIN908/KPL.MIT O-RING		
	/20	0634.313.558		O-RING	1			19X2		
	480	0634.303.251		O-RING	1			24X2,5		
	490	0731.611.079		ORIFICE	1			M8X8*D=1,0		
	500	0732.300.169		COMPRESSION SPRING	1		Z00018667810			
	510	4661.306.005		PISTON	1					
	520	0501.210.966		TAPPET SWITCH	1					
	/10	0634.306.523		O-RING	1			13X2		

Parts list

Page 2 from 2

Material number: 4661.044.012

Picture: 466110103900

Material-assembly-group-no: 4661.101.039



3 WG 94 /

	Pos.	Material number	Customer material	Name	Quantity	ME	Amend. no.	Techn. Info.	Rep kit	Alternative material
	530	4475.280.016		SCREW PLUG	2			M12X1,5 KPL.MIT O-RING		
	/20	0634.303.144		O-RING	1			9,5X2		

Picture

Page 1 from 1

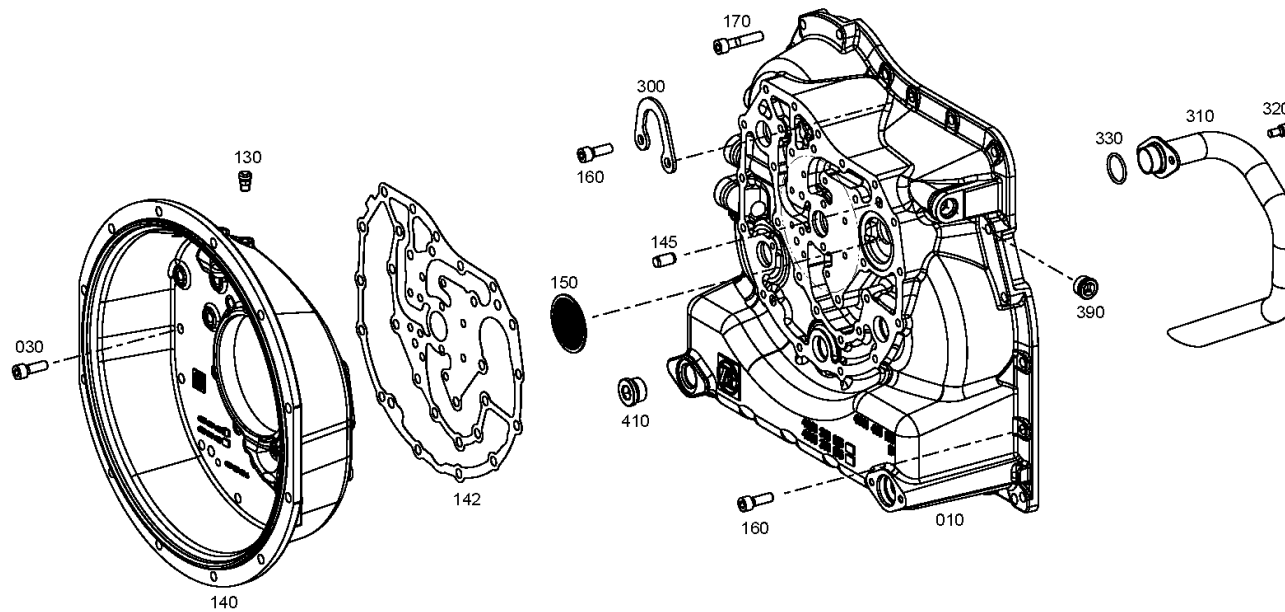
Material number: 4661.044.012

Picture: 466110182500

Material-assembly-group-no: 4661.101.825



3 WG 94 /
TRANSMISSION HOUSING



Parts list

Page 1 from 1

Material number: 4661.044.012

Picture: 466110182500

Material-assembly-group-no: 4661.101.825



3 WG 94 /

	Pos.	Material number	Customer material	Name	Quantity	ME	Amend. no.	Techn. Info.	Rep kit	Alternative material
	10	4661.301.113		HOUSING I	1					
	30	0636.103.279		CAP SCREW	28		Z00040093810	M10X30		
	130	0750.131.027		BREATHER	1					
	140	4661.330.021		CONVERTER BELL	1					
	142	4661.300.001		GASKET	1		Z00019189310			
	145	0631.306.174		CYLINDRICAL PIN	2			12X24		
	150	0501.321.521		FILTER	1					
	160	0636.103.285		CAP SCREW	9			M10X50		
	170	0636.103.279		CAP SCREW	13			M10X30		
	300	4660.301.009		BRACKET	1					
	310	4661.221.005		SUCTION TUBE	1			30X1,5		
	320	0636.103.274		CAP SCREW	2			M8X16		
	330	0634.100.317		O-RING	1			29,4X3,1		
	390	0750.100.022		SCREW PLUG	1		Z00045976710	7/8-14 UN 2A		
	410	0636.102.425		SCREW PLUG	1			UN1-1/16-12		

Picture

Page 1 from 1

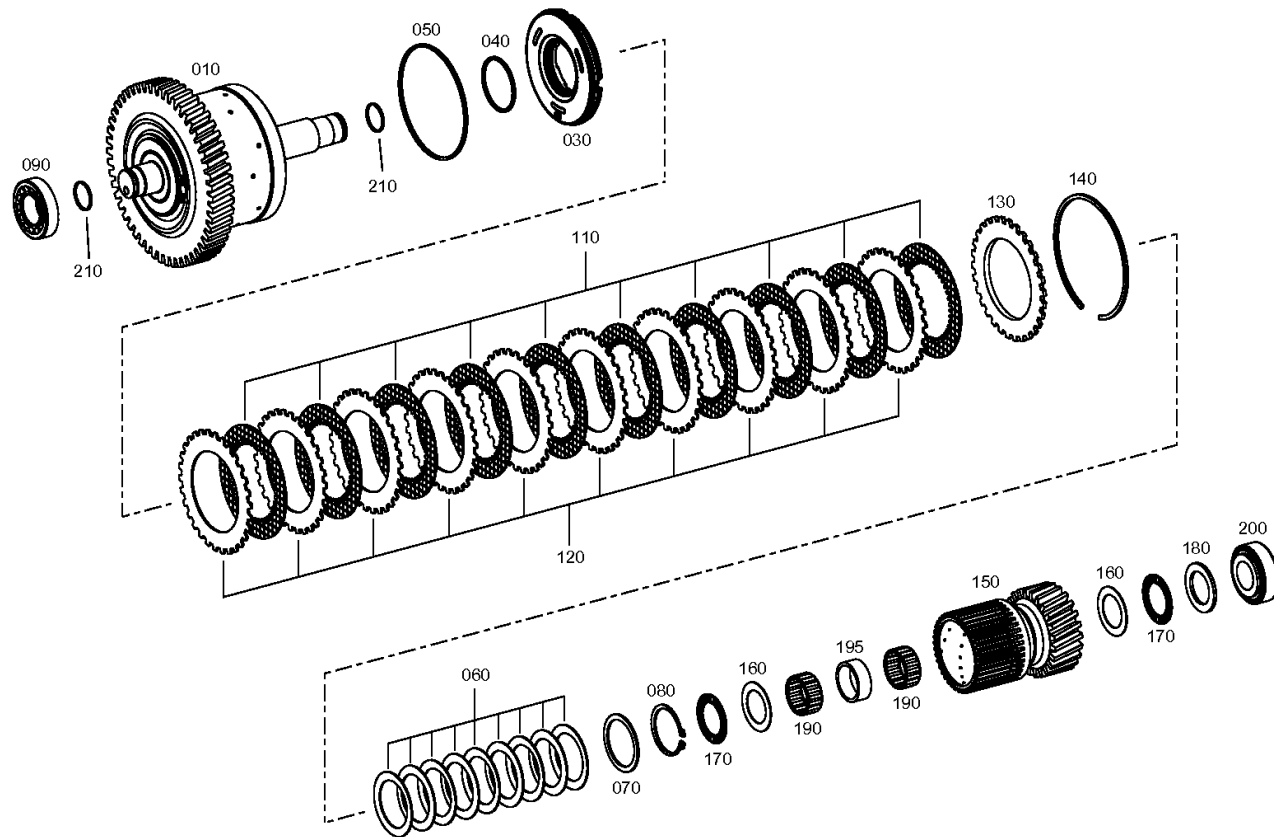
Material number: 4661.044.012

Picture: 466117100700

Material-assembly-group-no: 4661.171.007



3 WG 94 /
COUPLING



Parts list

Page 1 from 1



3 WG 94 /

Material number: 4661.044.012

Picture: 466117100700

Material-assembly-group-no: 4661.171.007

	Pos.	Material number	Customer material	Name	Quantity	ME	Amend. no.	Techn. Info.	Rep kit	Alternative material
	10	4661.271.007		CLUTCH	1					
	30	4661.272.020		PISTON	1			KOLBEN M.EINGEPRESSTEM VENTIL		
	40	0634.313.269		O-RING	1			52X3,0		
	50	0634.313.219		O-RING	1			115X3		
	60	0732.000.247		CUP SPRING	9					
	70	0730.112.266		WASHER	1			A=2,00		
	80	0630.501.035		RETAINING RING	1			50X2		
	90	4661.201.002		TAPER ROLLER BEARING	1		Z00019563010	31,750X62,000X19,050		
	110	0501.232.653		INNER CLUTCH DISK	10		Z00031585910			
	120	4661.351.004		OUTER CLUTCH DISK	10		Z00048463310			
	130	0501.326.779		END SHIM	1					
	140	---		SNAP RING	1		Z00012125210			
	---	0730.301.866		SNAP RING	1			h=2,50		
	---	0730.301.867		SNAP RING	1			h=2,75		
	---	0730.301.868		SNAP RING	1			h=3,00		
	---	0730.301.869		SNAP RING	1			h=3,25		
	---	0730.301.870		SNAP RING	1			h=3,50		
	---	0730.301.871		SNAP RING	1			h=3,75		
	---	0730.301.872		SNAP RING	1			h=4,00		
	150	4661.373.014		INNER DISK CARRIER	1			Z=24		
	160	0635.290.002		AXIAL WASHER	2			35X52X1		
	170	0635.302.019		AXIAL NEEDLE CAGE	2			35X52X2		
	180	0635.290.031		RUNNING DISK	1			35X52X3,5		
	190	0735.321.222		NEEDLE CAGE	2			35X42X18		
	195	0730.163.212		BUSH	1			A=15,00		
	200	4661.273.005		TAPERED ROLLER BEARING	1			30,000X62,000X21,250		
	210	0734.401.296		RECTANGULAR RING	2			30X2		

Picture

Page 1 from 1

Material number: 4661.044.012

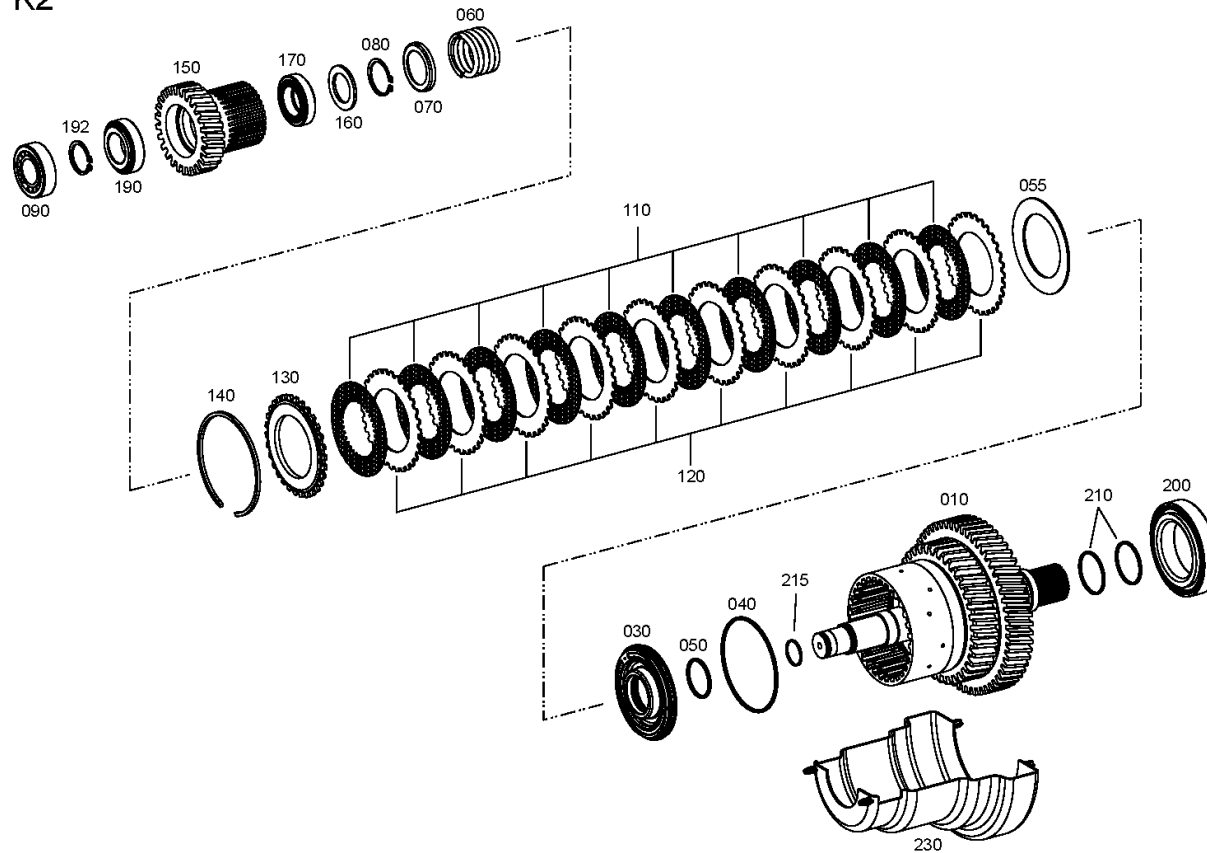
Picture: 466117202500

Material-assembly-group-no: 4661.172.025



3 WG 94 /
COUPLING

K2



Parts list

Page 1 from 2



3 WG 94 /

Material number: 4661.044.012

Picture: 466117202500

Material-assembly-group-no: 4661.172.025

	Pos.	Material number	Customer material	Name	Quantity	ME	Amend. no.	Techn. Info.	Rep kit	Alternative material
	10	4661.272.033		CLUTCH	1					
	30	4661.275.010		PISTON	1			KPL. D-Teil		
	40	0634.313.005		O-RING	1			104,5X3		
	50	0634.313.395		O-RING	1			40X3		
	55	0501.323.146		CUP SPRING	1					
	60	0732.042.926		COMPRESSION SPRING	1					
	70	4661.302.005		SPRING CUP	1					
	80	0630.501.031		RETAINING RING	1			40X1,75		
	90	4661.273.005		TAPERED ROLLER BEARING	1			30,000X62,000X21,250		
	110	0501.232.652		INNER CLUTCH DISK	10					
	120	4661.351.003		OUTER CLUTCH DISK	10		Z00048463110			
	130	0501.321.411		END SHIM	1					
	140	---		SNAP RING	1					
	---	0730.514.794		SNAP RING	1			D-TEIL*h=3,00		
	---	0730.514.792		SNAP RING	1			h=2,50		
	---	0730.514.793		SNAP RING	1			h=2,75		
	---	0730.514.795		SNAP RING	1			h=3,25		
	---	0730.514.796		SNAP RING	1			h=3,50		
	---	0730.514.797		SNAP RING	1			h=3,75		
	---	0730.514.798		SNAP RING	1			h=4,00		
	150	4661.375.025		INNER DISK CARRIER	1			Z=26		
	160	0635.290.031		RUNNING DISK	1			35X52X3,5		
	170	4661.272.016		TAPERED ROLLER BEARING	1			34,987X59,131X15,875		
	190	0735.372.531		TAPERED ROLLER BEARING	1			35,000X62,000X18,000		
	192	---		RETAINING RING	1					
	---	0730.501.884		RETAINING RING	1			A=1,80		
	---	0730.501.886		RETAINING RING	1			A=1,90		
	---	0730.501.813		RETAINING RING	1			A=2,00		
	---	0730.501.815		RETAINING RING	1			A=2,10		
	---	0730.501.816		RETAINING RING	1			A=2,15		
	---	0730.501.817		RETAINING RING	1			A=2,20		
	---	0730.501.818		RETAINING RING	1			A=2,25		
	---	0730.501.819		RETAINING RING	1			A=2,30		
	---	0730.501.821		RETAINING RING	1			A=2,40		

Parts list

Page 2 from 2



3 WG 94 /

Material number: 4661.044.012

Picture: 466117202500

Material-assembly-group-no: 4661.172.025

	Pos.	Material number	Customer material	Name	Quantity	ME	Amend. no.	Techn. Info.	Rep kit	Alternative material
	---	0730.501.674		RETAINING RING	1			A=2,50 IN 0730 501 669(2)		
	---	0730.501.672		RETAINING RING	1			A=2,60 IN 0730 501 669(2)		
	---	0730.501.670		RETAINING RING	1			A=2,70 IN 0730 501 669(2)		
	200	4950.203.001		TAPERED ROLLER BEARING	1			66,675X110,000X21,996		
	210	0734.401.309		RECTANGULAR RING	2			50X2.5		
	215	0734.401.296		RECTANGULAR RING	1			30X2		
	230	4661.372.041		SCREEN SHEET	1			D-TEIL		

Picture

Page 1 from 1

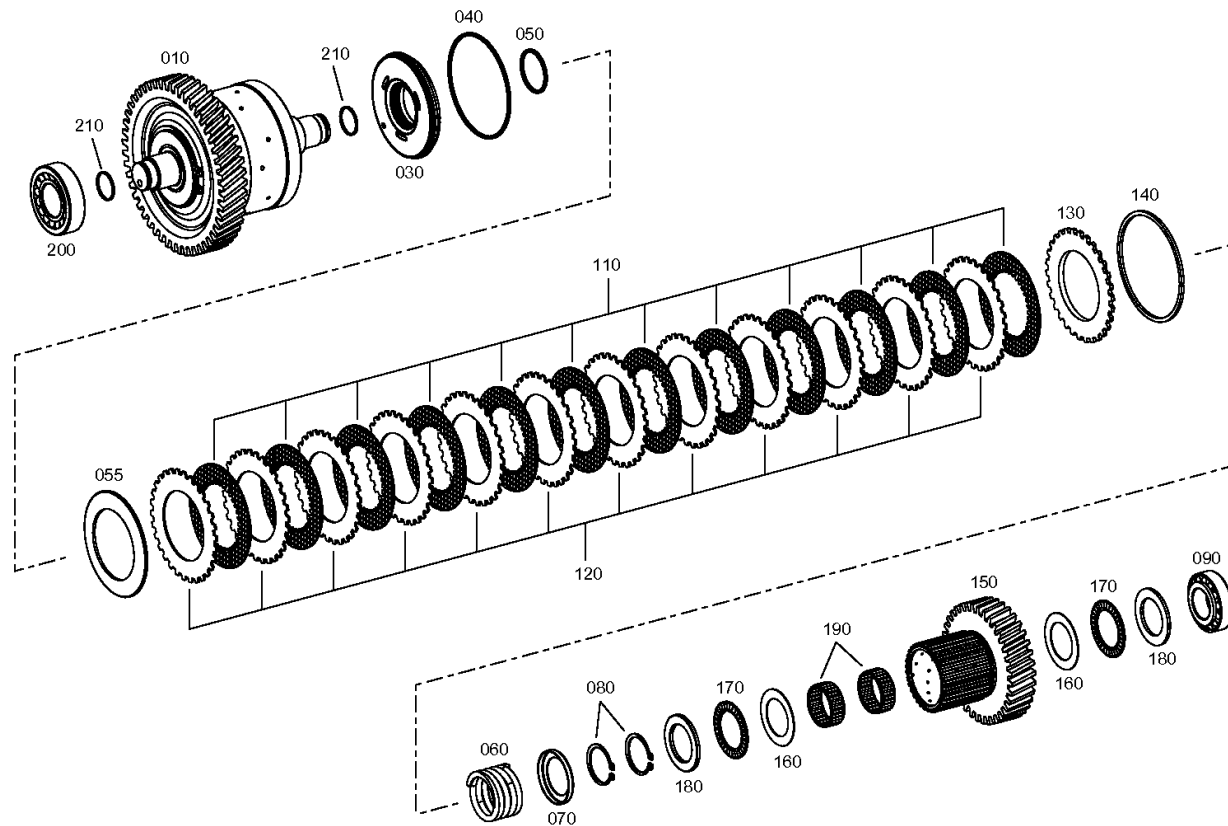
Material number: 4661.044.012

Picture: 466117400800

Material-assembly-group-no: 4661.174.008



3 WG 94 /
COUPLING



Parts list

Page 1 from 1



3 WG 94 /

Material number: 4661.044.012

Picture: 466117400800

Material-assembly-group-no: 4661.174.008

	Pos.	Material number	Customer material	Name	Quantity	ME	Amend. no.	Techn. Info.	Rep kit	Alternative material
	10	4661.274.013		COUPLING	1		Z00018589711			
	30	4661.275.010		PISTON	1			KPL. D-Teil		
	40	0634.313.005		O-RING	1			104,5X3		
	50	0634.313.395		O-RING	1			40X3		
	55	0501.323.146		CUP SPRING	1					
	60	0732.042.926		COMPRESSION SPRING	1					
	70	4661.302.005		SPRING CUP	1					
	80	0630.501.031		RETAINING RING	2			40X1,75		
	90	4661.201.202		TAPERED ROLLER BEARING	1		Z00053529510	31,750X62,00X19,050		
	110	0501.232.652		INNER CLUTCH DISK	12		Z00031585911			
	120	4661.351.003		OUTER CLUTCH DISK	12		Z00048463110			
	130	0501.321.411		END SHIM	1					
	140	---		SNAP RING	1		Z00018874410			
	---	0730.514.794		SNAP RING	1			D-TEIL*h=3,00		
	---	0730.514.792		SNAP RING	1			h=2,50		
	---	0730.514.793		SNAP RING	1			h=2,75		
	---	0730.514.795		SNAP RING	1			h=3,25		
	---	0730.514.796		SNAP RING	1			h=3,50		
	---	0730.514.797		SNAP RING	1			h=3,75		
	---	0730.514.798		SNAP RING	1			h=4,00		
	150	4661.374.007		INNER DISK CARRIER	1			Z=29		
	160	0635.290.035		AXIAL WASHER	2			40X60X1		
	170	0635.302.034		AXIAL NEEDLE CAGE	2			40X60X3		
	180	0635.290.063		RUNNING DISK	2			40X60X3,5		
	190	0735.321.579		NEEDLE CAGE	2			40X45X17		
	200	4661.201.003		TAPER ROLLER BEARING	1		Z00019565410	34,925X73,025X24,608		
	210	0734.401.296		RECTANGULAR RING	2			30X2		

Picture

Page 1 from 1

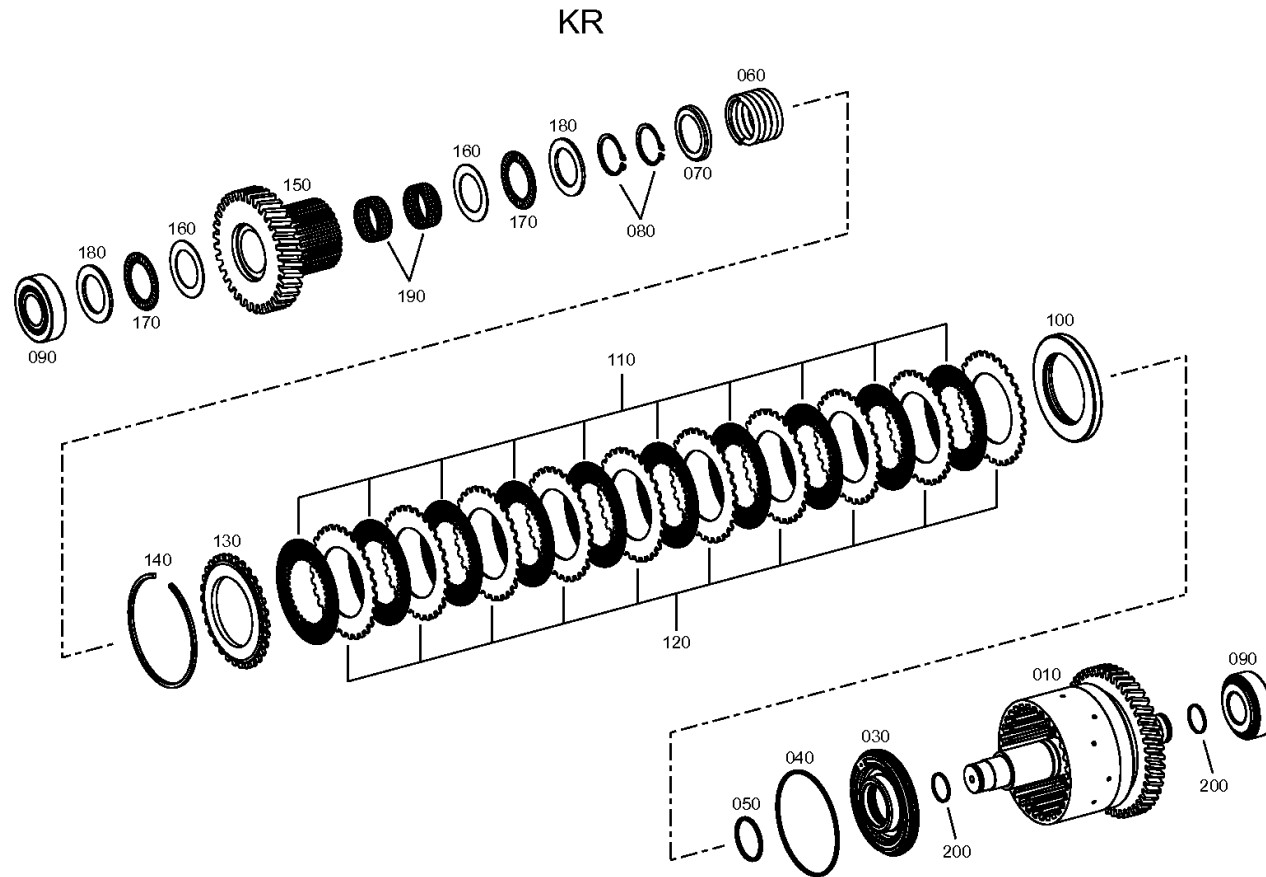
Material number: 4661.044.012

Picture: 466117600700

Material-assembly-group-no: 4661.176.007



3 WG 94 /
COUPLING



Parts list

Page 1 from 1



3 WG 94 /

Material number: 4661.044.012

Picture: 466117600700

Material-assembly-group-no: 4661.176.007

	Pos.	Material number	Customer material	Name	Quantity	ME	Amend. no.	Techn. Info.	Rep kit	Alternative material
	10	4661.276.006		CLUTCH	1					
	30	4661.275.010		PISTON	1			KPL. D-Teil		
	40	0634.313.005		O-RING	1			104,5X3		
	50	0634.313.395		O-RING	1			40X3		
	60	0732.042.926		COMPRESSION SPRING	1					
	70	4661.302.005		SPRING CUP	1					
	80	0630.501.031		RETAINING RING	2			40X1,75		
	90	4661.201.004		TAPERED ROLLER BEARING	2		Z00019567510	31,750X68,262X22,225		
	100	4661.202.026		SHEET	1					
	110	0501.232.652		INNER CLUTCH DISK	10		Z00031585911			
	120	4661.351.003		OUTER CLUTCH DISK	10		Z00048463110			
	130	0501.321.411		END SHIM	1					
	140	---		SNAP RING	1		Z00018874410			
	---	0730.514.794		SNAP RING	1			D-TEIL*h=3,00		
	---	0730.514.792		SNAP RING	1			h=2,50		
	---	0730.514.793		SNAP RING	1			h=2,75		
	---	0730.514.795		SNAP RING	1			h=3,25		
	---	0730.514.796		SNAP RING	1			h=3,50		
	---	0730.514.797		SNAP RING	1			h=3,75		
	---	0730.514.798		SNAP RING	1			h=4,00		
	150	4661.376.003		INNER DISK CARRIER	1			Z=33		
	160	0635.290.035		AXIAL WASHER	2			40X60X1		
	170	0635.302.034		AXIAL NEEDLE CAGE	2			40X60X3		
	180	0635.290.063		RUNNING DISK	2			40X60X3,5		
	190	0735.321.579		NEEDLE CAGE	2			40X45X17		
	200	0734.401.296		RECTANGULAR RING	2			30X2		

Picture

Page 1 from 1

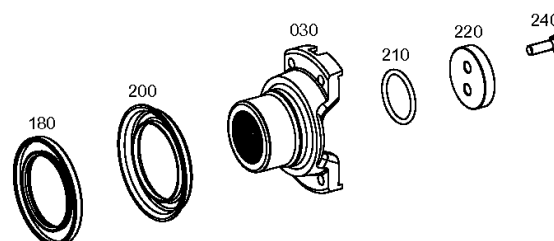
Material number: 4661.044.012

Picture: 466110381500

Material-assembly-group-no: 4661.103.815



3 WG 94 /
OUTPUT



Parts list

Page 1 from 1

Material number: 4661.044.012

Picture: 466110381500

Material-assembly-group-no: 4661.103.815



3 WG 94 /

	Pos.	Material number	Customer material	Name	Quantity	ME	Amend. no.	Techn. Info.	Rep kit	Alternative material
	30	4661.303.007		OUTPUT FLANGE	1			Z=32		
	180	0734.309.932		SHAFT SEAL	1		Z00038753810	60,000X90,000X8,000		
	200	4660.303.021		SCREEN SHEET	1					
	210	0634.306.328		O-RING	1			38X4		
	220	4660.303.022		WASHER	1					
	240	0636.016.421		HEXAGON SCREW	2			M8X25		

Picture

Page 1 from 1

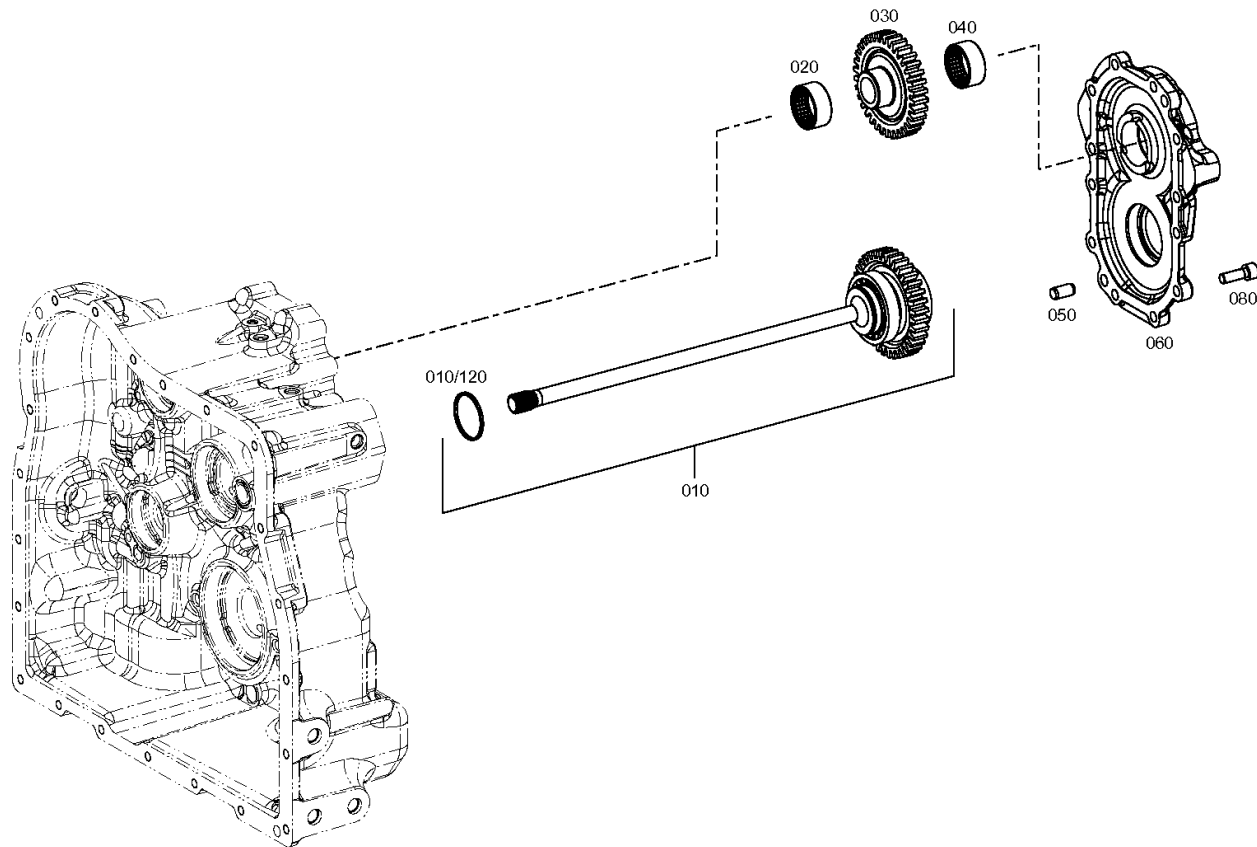
Material number: 4661.044.012

Picture: 466115500200

Material-assembly-group-no: 4661.155.002



3 WG 94 /
POWER TAKE-OFF



Parts list

Page 1 from 1



3 WG 94 /

Material number: 4661.044.012

Picture: 466115500200

Material-assembly-group-no: 4661.155.002

	Pos.	Material number	Customer material	Name	Quantity	ME	Amend. no.	Techn. Info.	Rep kit	Alternative material
	10	4661.202.007		CENTRAL SHAFT	1					
	/120	0734.401.309		RECTANGULAR RING	1			50X2.5		
	20	0635.303.113		NEEDLE SLEEVE	1			40X47X20		
	30	4661.302.010		GEAR	1			Z=34 D-Teil		
	40	0635.303.113		NEEDLE SLEEVE	1			40X47X20		
	50	0631.306.174		CYLINDRICAL PIN	2			12X24		
	60	4661.302.029		COVER	1		Z00019624010	D-TEIL		
	80	0636.103.279		CAP SCREW	12			M10X30		

Picture

Page 1 from 1

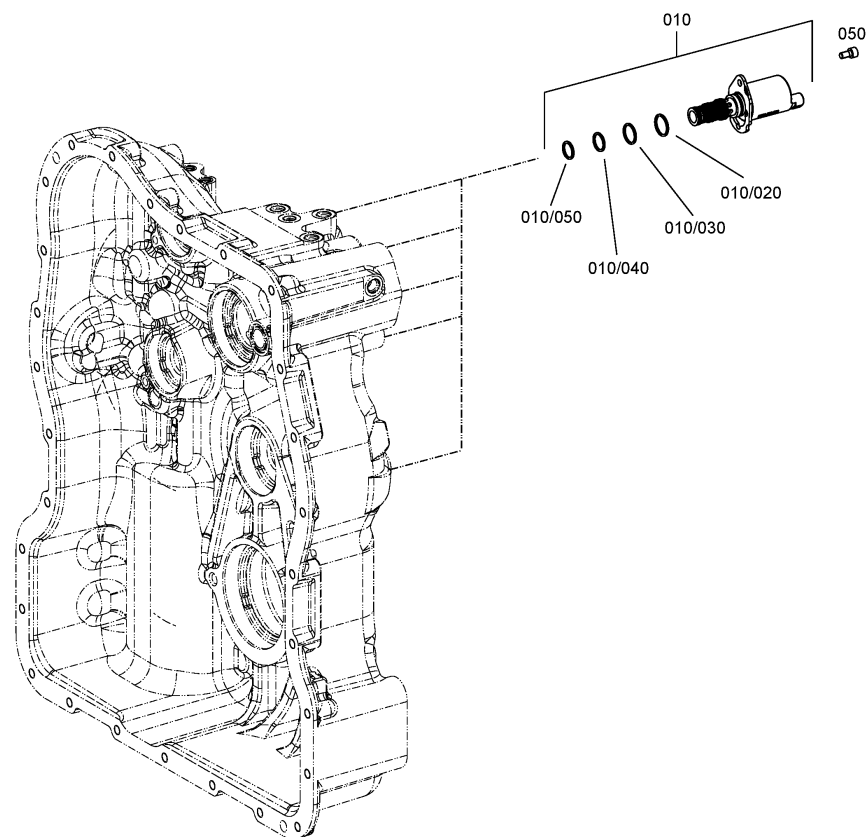
Material number: 4661.044.012

Picture: 466110601200

Material-assembly-group-no: 4661.106.012



3 WG 94 /
CONTROL UNIT



Parts list

Page 1 from 1

Material number: 4661.044.012

Picture: 466110601200

Material-assembly-group-no: 4661.106.012



3 WG 94 /

	Pos.	Material number	Customer material	Name	Quantity	ME	Amend. no.	Techn. Info.	Rep kit	Alternative material
	10	0501.330.964		PRESSURE REGULATOR	5		Z00020879110			
	/20	0634.306.207		O-RING	1			20X2		
	/30	0634.304.204		O-RING	1			18X2		
	/40	0634.304.309		O-RING	1			16X2		
	/50	0634.306.524		O-RING	1			15X2		
	50	0636.103.286		CAP SCREW	10			M6X12		

Picture

Page 1 from 1

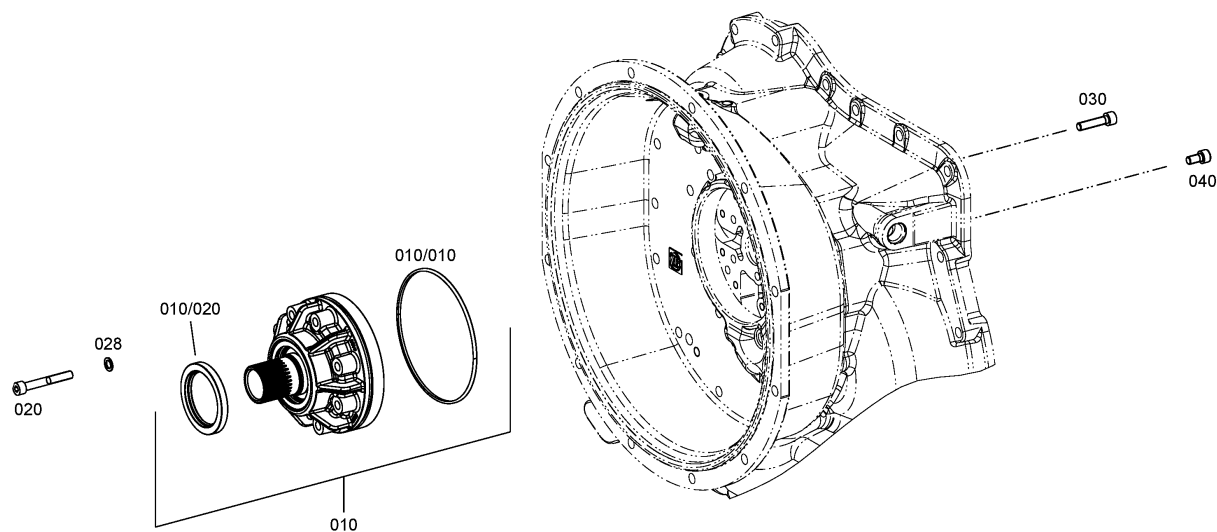
Material number: 4661.044.012

Picture: 466112200500

Material-assembly-group-no: 4661.122.005



3 WG 94 /
PRESSURE OIL PUMP



Parts list

Page 1 from 1

Material number: 4661.044.012

Picture: 466112200500

Material-assembly-group-no: 4661.122.005



3 WG 94 /

	Pos.	Material number	Customer material	Name	Quantity	ME	Amend. no.	Techn. Info.	Rep kit	Alternative material
	10	0501.224.432		PUMP	1			113X142		
	/10	0634.303.026		O-RING	1			135X3		
	/20	0634.100.843		SHAFT SEALING RING	1			55X75X8		
	20	0636.100.603		CAP SCREW	8			M8X60		
	28	0630.100.470		SEALING RING	8			8,7X14X1,0		
	30	0636.103.275		CAP SCREW	2			M8X35		
	40	0636.103.274		CAP SCREW	2			M8X16		

Picture

Page 1 from 1

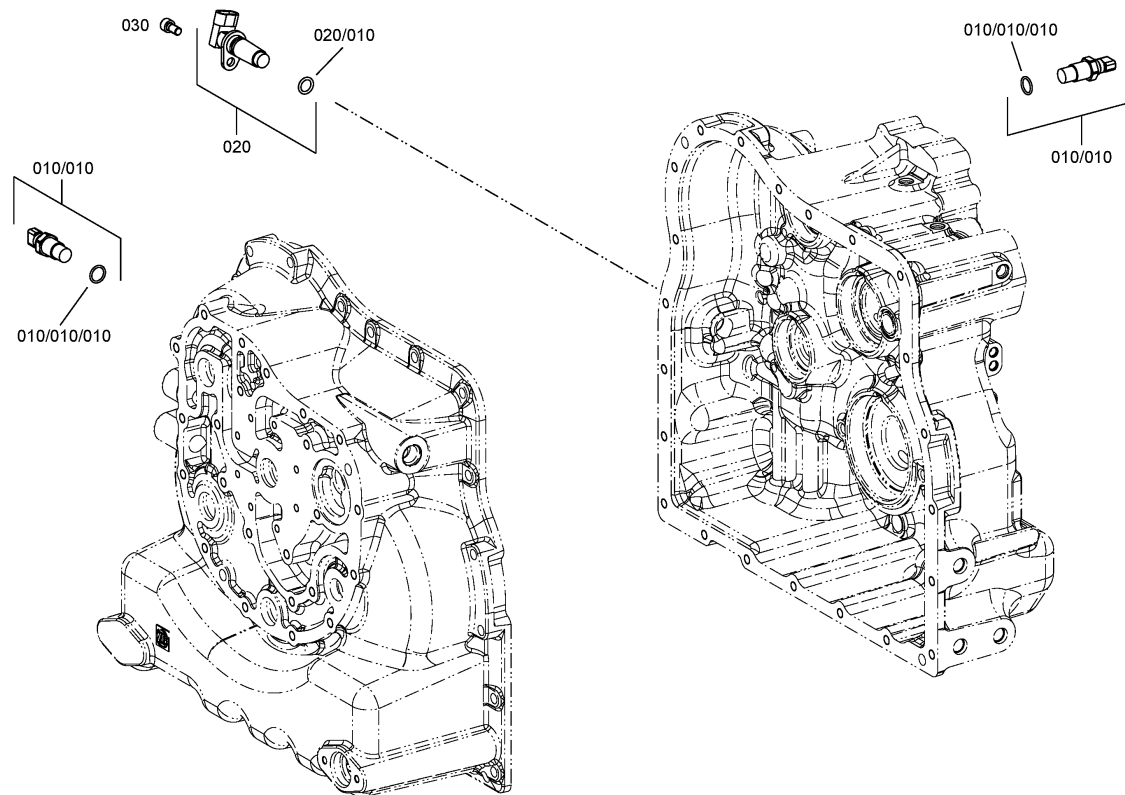
Material number: 4661.044.012

Picture: 466112500100

Material-assembly-group-no: 4661.125.001



3 WG 94 /
INDUCTIVE SENSOR



Parts list

Page 1 from 1



3 WG 94 /

Material number: 4661.044.012

Picture: 466112500100

Material-assembly-group-no: 4661.125.001

	Pos.	Material number	Customer material	Name	Quantity	ME	Amend. no.	Techn. Info.	Rep kit	Alternative material
	10	---		INDUCTIVE SENSOR	2					
	---	0501.209.719		INDUCTIVE SENSOR	1					
	/10	0734.313.125		O-RING	1					
	20	0501.337.903		SPEED SENSOR	1		Z00054149417			
	/10	0634.313.728		O-RING	1			15,54X2,62		
	30	0636.103.274		CAP SCREW	1			M8X16		

Picture

Page 1 from 1

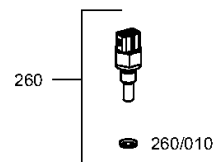
Material number: 4661.044.012

Picture: 466112400100

Material-assembly-group-no: 4661.124.001



3 WG 94 /
TEMPERATURE SENSOR



Parts list

Page 1 from 1



3 WG 94 /

Material number: 4661.044.012

Picture: 466112400100

Material-assembly-group-no: 4661.124.001

	Pos.	Material number	Customer material	Name	Quantity	ME	Amend. no.	Techn. Info.	Rep kit	Alternative material
	260	0501.322.533		TEMPERATURE SENSOR	1			TEMP GEBER EXT KURZ		
	/10	0634.313.366		O-RING	1			11X2		

Picture

Page 1 from 1

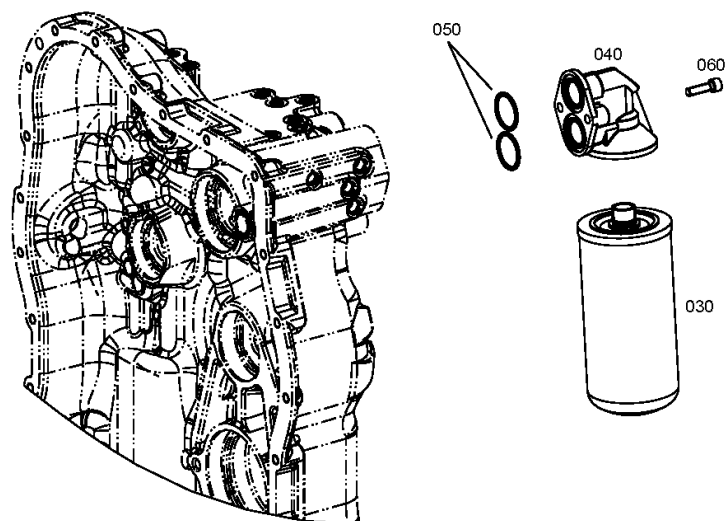
Material number: 4661.044.012

Picture: 466113800300

Material-assembly-group-no: 4661.138.003



3 WG 94 /
FILTER



Parts list

Page 1 from 1



3 WG 94 /

Material number: 4661.044.012

Picture: 466113800300

Material-assembly-group-no: 4661.138.003

	Pos.	Material number	Customer material	Name	Quantity	ME	Amend. no.	Techn. Info.	Rep kit	Alternative material
	30	0501.333.764		PRESSURE FILTER	1					
	40	0501.338.332		FILTER HEAD	1		Z00047267910	76X95		
	50	0634.306.053		O-RING	2			34,2X3		
	60	0636.103.284		CAP SCREW	2			M8X30		

Picture

Page 1 from 1

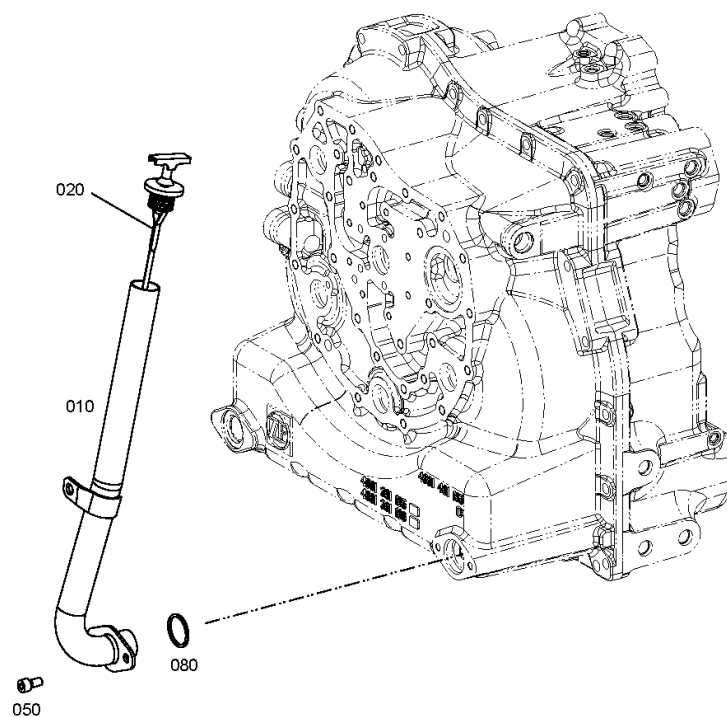
Material number: 4661.044.012

Picture: 466113100800

Material-assembly-group-no: 4661.131.008



3 WG 94 /
OIL DIPSTICK



Parts list

Page 1 from 1

Material number: 4661.044.012

Picture: 466113100800

Material-assembly-group-no: 4661.131.008



3 WG 94 /

	Pos.	Material number	Customer material	Name	Quantity	ME	Amend. no.	Techn. Info.	Rep kit	Alternative material
	10	4661.231.008		TUBE	1		Z00036029510	30,000X1,500		
	20	0501.224.243		OIL DIPSTICK	1		Z00043985810			
	50	0636.103.274		CAP SCREW	2			M8X16		
	60	0634.100.317		O-RING	1		Z00036029510	29,4X3,1		

Picture

Page 1 from 1

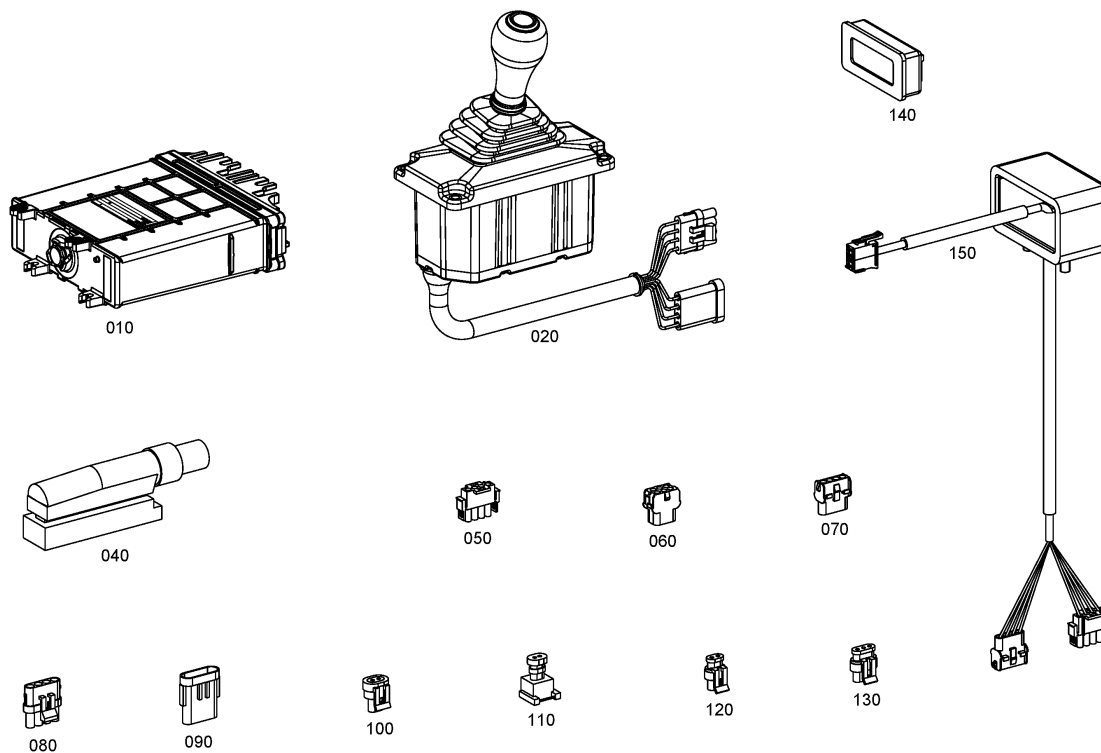
Material number: 4661.044.012

Picture: 466118504200

Material-assembly-group-no: 4661.185.042



3 WG 94 /
ACCESSORIES



Parts list

Page 1 from 1

Material number: 4661.044.012

Picture: 466118504200

Material-assembly-group-no: 4661.185.042



3 WG 94 /

	Pos.	Material number	Customer material	Name	Quantity	ME	Amend. no.	Techn. Info.	Rep kit	Alternative material
	10	6073.003.092		CONTROL UNIT	1					
	20	6006.035.005		SHIFTER	1			FS VTS 3		
	40	6029.199.063		PLUG KIT	1			068POL BU MICRO-TIMER II		
	50	6029.199.008		PLUG KIT	1			STECKER 4POL M-N-L BU		
	60	6029.199.074		PLUG KIT	1			STECKER 6POL MNL ST		
	70	6029.199.028		PLUG KIT	1			STECKER 4POL M-N-L ST		
	80	6029.199.046		PLUG KIT	1			STECKER 4POL WEATHERPACK		
	90	6029.199.048		PLUG KIT	1			STECKER 4POL WEATHERPACK		
	100	6029.199.159		PLUG KIT	5			STECKER 2POL METRI-PACK GR		
	110	6029.199.011		PLUG KIT	3			STECKER 2POL MINI-TIMER		
	120	6029.199.045		PLUG KIT	1			STECKER 2POL BU SUPERSEAL		
	130	6029.199.071		PLUG KIT	1			3POL BU SUPERSEAL VERZ.		
	140	0501.236.174		DISPLAY	1					
	150	6029.027.138		CABLE OFF-ROAD	1			ZF DISPLAY WIRE		